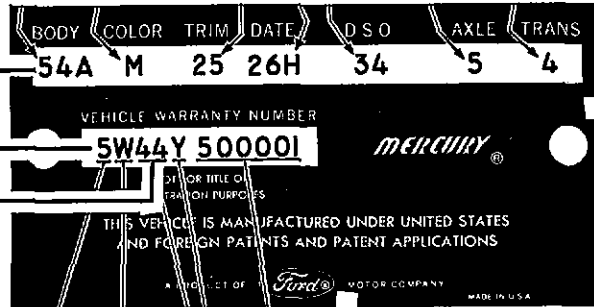


Typ Type	Code carr.	Modell Modèle	Code Mod.	Motor Moteur (n.Wunsch/s.demande)	Code	Kraftübertragung Transmission (n.Wunsch/s.demande)	Typenschein - Nr. Bordereau de type No
Comet	202	54 A 4-Door Sedan	02	S I X - 170 cu.in.	U	3-Gang mech.synchron. 3-vit. méc. synchron.	} 4 7 7 6 (170 cu.in.) } 4 7 7 7 (200 cu.in.)
		62 A 2-Door Sedan	01		4		
	404	54 B 4-Door Sedan	12	S I X - 200 cu.in.	T	4-Gang vollsynchron. 4-vit. toutes synchr.	
		62 B 2-Door Sedan	11		2		
		62 C 2-Door Sedan (Bucket)	11				
	Caliente	54 C 4-Door Sedan (Bucket)	22	V - 8 - 289 cu.in.	A	Multi-Drive Mercomatic	
		54 D 4-Door Sedan	22		C		
		63 C 2-Door Hardtop Fastback(Bucket)	23		K		
		63 D 2-Door Hardtop Fastback	23		3		
		76 B 2-Door Convertible (Bucket)	25				
76 D 2-Door Convertible	25						
Cyclone	63 E 2-Door Hardtop Fastback(Bucket)	23					
Monterey	50 A 4-Door Sedan	42	V - 8 - 390 cu.in. 250/4'400 - 390 cu.in. 266/4'400 - 390 cu.in. 300/4'600 - 390 cu.in. 330/5'000	3-Gang vollsynchron. 4-Gang vollsynchron. Multi-Drive Mercomatic	*)		
	62 A 2-Door Sedan	43					
	54 A 4-Door Sedan	44					
	76 A 2-Door Convertible	45					
	63 A 2-Door Hardtop Fastback	47					
	57 A 4-Door Hardtop Fastback	48					
	76 G 2-Door Convertible (Bucket)	45					
	63 G 2-Door Hardtop Fastback(Bucket)	47					
	Montclair	50 B 4-Door Sedan				52	V - 8 - 427 cu.in. 425/6'000
63 B 2-Door Hardtop Fastback		57					
57 B 4-Door Hardtop Fastback		58					
Parklane	50 F 4-Door Sedan	62					
	76 F 2-Door Convertible	65					
	76 C 2-Door Convertible (Bucket)	65					
	63 F 2-Door Hardtop Fastback	67					
	63 C 2-Door Hardtop Fastback(Bucket)	67					

Bemerkungen
Observations

Karosserie-Nr.
No de carrosserie
Modelljahr
Année du modèle
Code des Modèles
Code du modèle

*) Einzelprüfung
Expertise individuelle



Code Motor-Typ

Code type du moteur

Ab Chassis-Nr.

A partir du No de châssis

500'001

Motoren / moteurs

Steuer-PS/CV-Impôt

SIX 170 cu.in. = 2'783 cm³ 14,17
200 = 3'273 16,67

V-8 390 cu.in. = 6'383 cm³ 32,51
427 = 6'958 35,44

Code = Buchstabe = hohe Verdichtung
lettre = compression élevée

Ziffer = niedrige Verdichtung
chiffre = compression basse