



IVZ-Fahrzeuge

Alter des aktiven Fahrzeugbestands nach Fahrzeugart

Aktiver Bestand: Fahrzeug in Verkehr, CH und FL

Alter in Jahren: Dauer seit Erstinverkehrsetzung, abgerundet auf ganze Jahre

Veteran: Hier Fahrzeuge mit besonderer Verwendung «Veteranenfahrzeug» (Feld 17 im Fahrzeugausweis)

Diagramme: Bestand pro Jahrgang (Erstinverkehrsetzung)

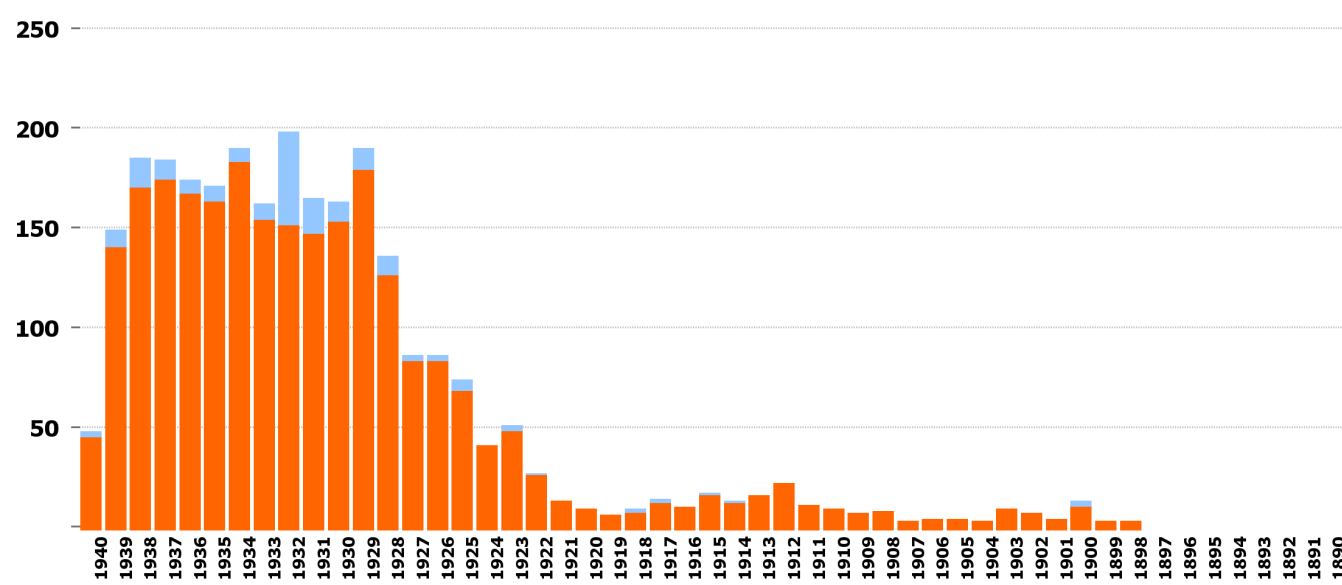
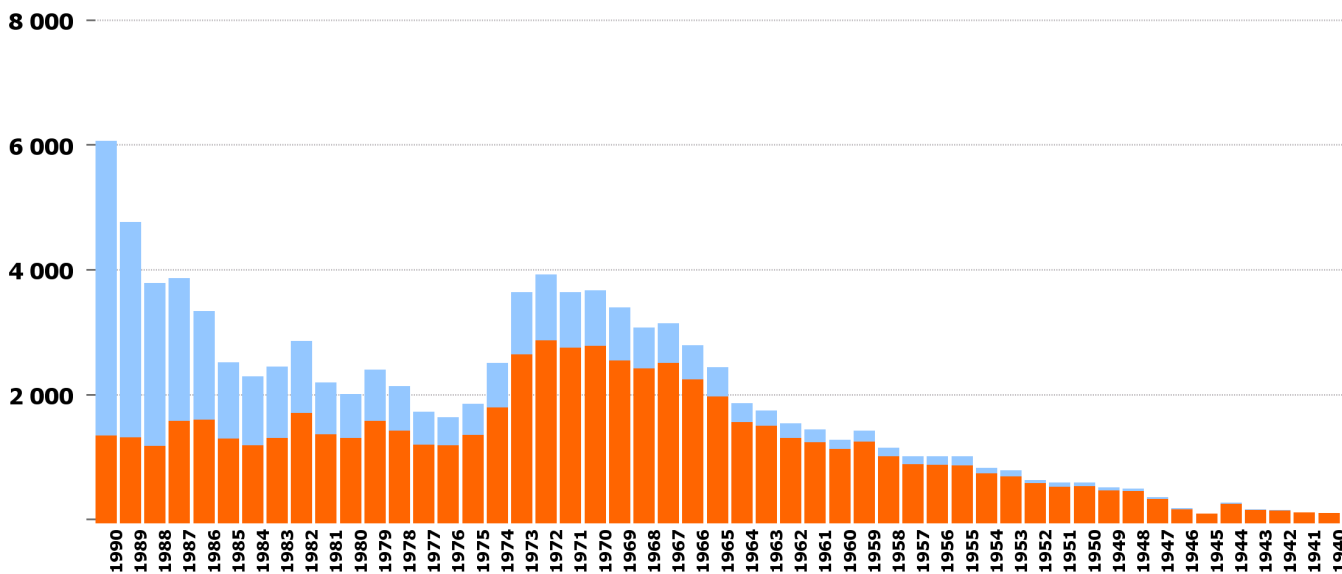
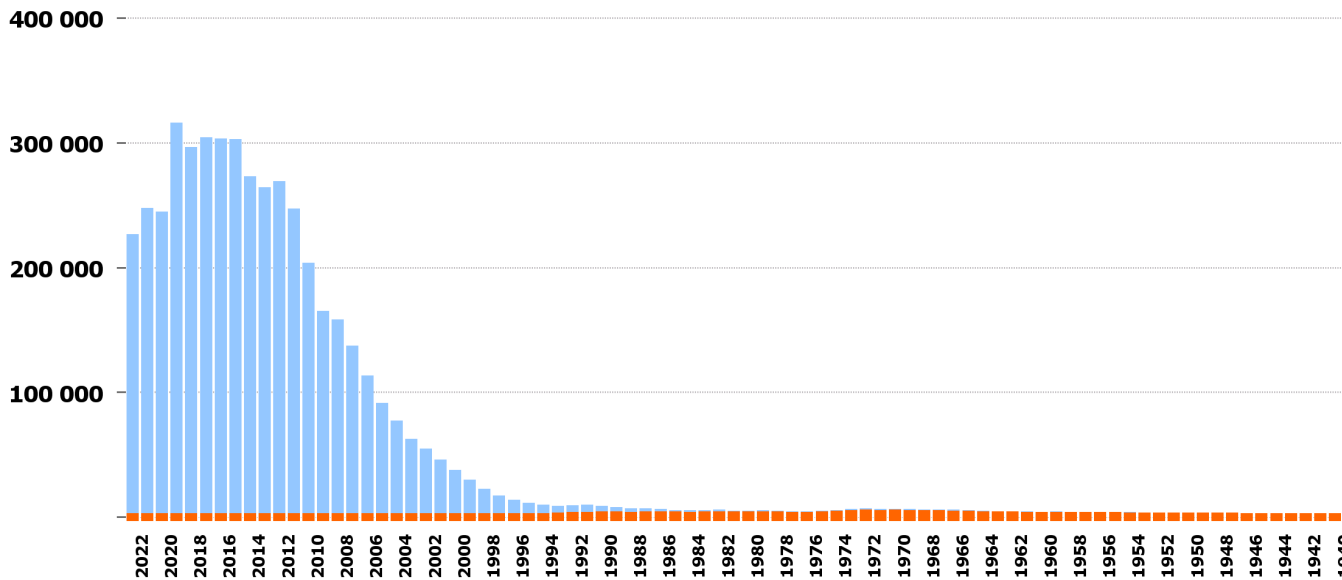
Veteranen jünger als 30 Jahre: Möglicherweise war das Erstinverkehrsetzungsdatum nicht ermittelbar und es kam ein Ersatzdatum, z.B. vom Import, zur Verwendung

Bestand der 1900 bis 1920-er-Jahre: Teilweise Übertragungsfehler beim Datum, Fahrzeuge stammen oft aus den 2000 bis 2020-er-Jahren

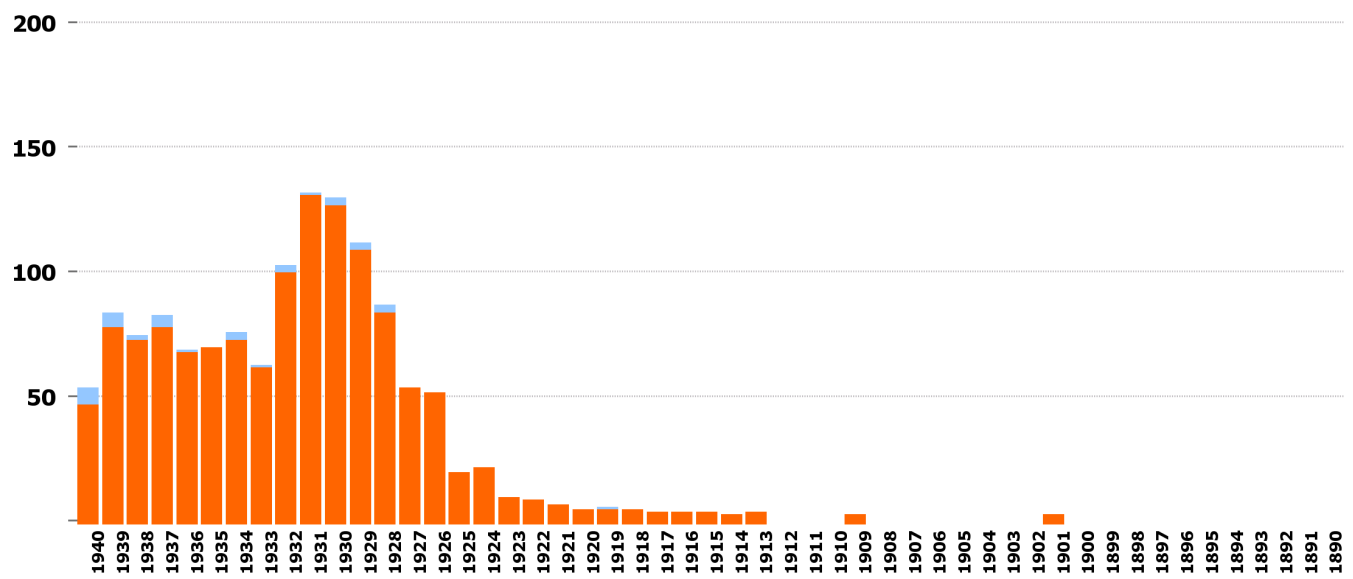
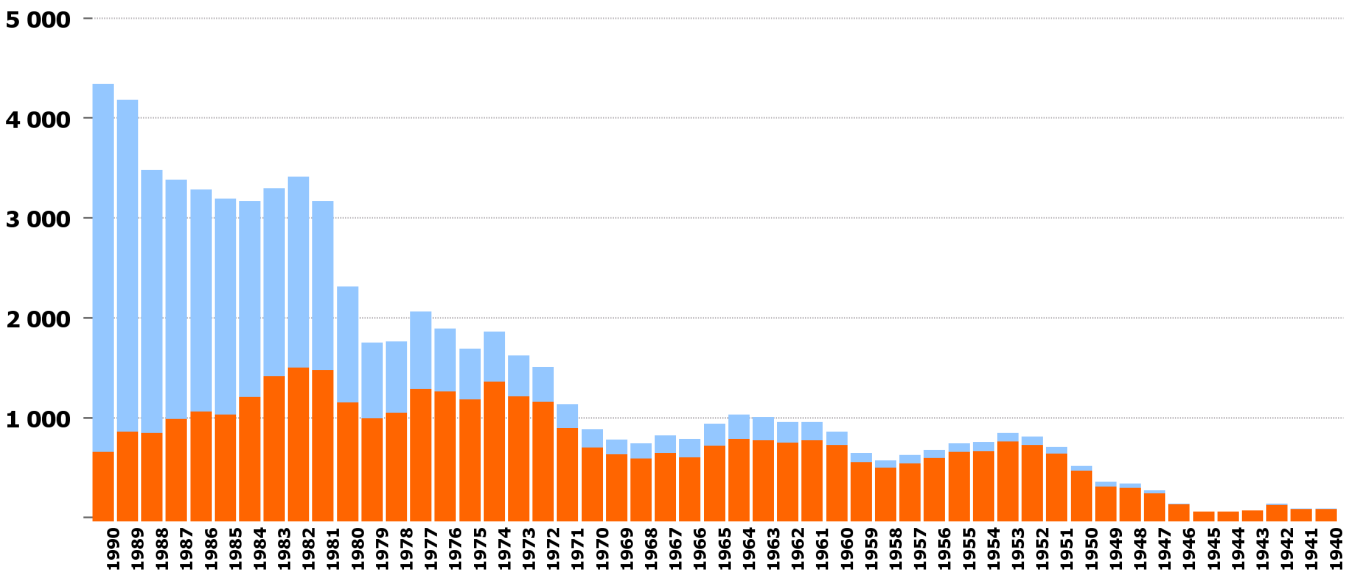
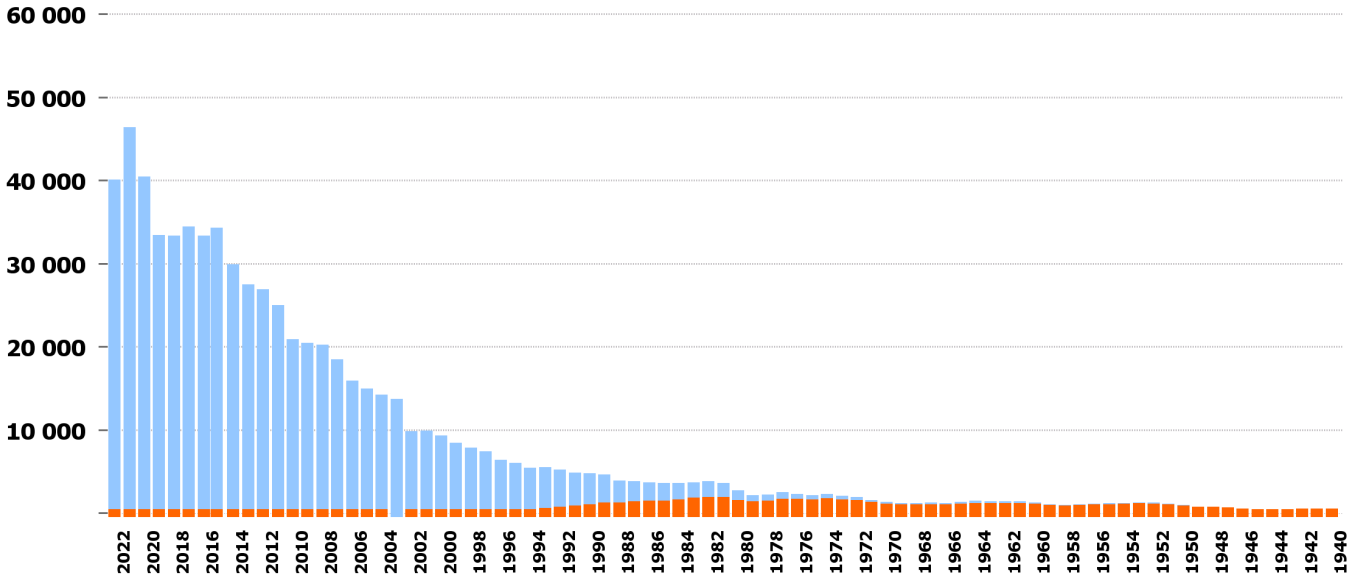
Stichtag: 15.11.2023

	Bestand	30 Jahre oder älter	Veteran	Ø- Alter	Median Alter	vor 1990	vor 1980	vor 1970
01 Personenwagen	4 780 340	115 277	65 094	10,3	8,7	90 909	61 439	34 921
60 Motorrad	724 799	84 254	38 270	14,1	10,1	65 768	33 274	17 489
30 Lieferwagen	438 957	8 709	2 504	9,1	7,5	6 740	3 918	2 740
43 Landwirt. Traktor	146 211	68 872	2 790	29,5	28,2	60 200	35 611	16 493
10 Leichter Motorwag ...	89 977	7 730	473	11,4	7,9	5 088	1 353	181
35 Lastwagen	48 638	1 483	380	10,5	8,1	1 131	408	212
51 Arbeitskarren	35 350	2 133	19	11,9	9,7	1 388	277	65
81 Landw. Motorkarren	31 571	21 805	111	36,4	35,7	18 126	9 459	2 888
80 Motorkarren	23 610	3 691	94	16,0	11,6	2 994	1 579	858
61 Kleinmotorrad	18 943	1 887	1 102	15,7	12,2	1 757	1 327	713
50 Arbeitsmaschine	18 186	1 909	128	14,6	11,8	1 068	381	203
66 Kleinmotorfahrzeug	18 151	21	19	8,8	7,8	18	16	15
38 Sattelschlepper	13 205	77	34	6,6	5,8	51	25	3
52 Landw. Arbeitskar ...	11 899	1 289	2	14,3	11,5	908	222	44
64 Kleinmotorrad-Dre ...	7 944	41	18	5,1	4,0	25	16	7
42 Traktor	7 822	552	104	11,4	7,1	491	353	269
83 Landw. Motoreinac ...	7 576	6 360	168	48,3	54,5	6 175	5 474	3 909
20 Gesellschaftswagen	7 522	117	71	8,3	7,0	110	88	78
11 Schwerer Motorwag ...	7 324	502	25	12,5	9,4	382	129	66
21 Kleinbus	4 774	66	14	12,6	12,1	40	15	6
67 Dreirädr. Motorfa ...	4 566	387	211	12,7	8,3	361	215	176
63 Motorrad-Seitenwa ...	3 054	1 958	1 184	40,7	36,9	1 699	1 205	972
22 Gelenkbus	2 077			7,7	7,2			
68 Motorschlitten	1 024	43	1	14,3	13,9	13	2	
02 Schwerer Personen ...	751	18	16	9,0	6,6	18	18	18
62 Motorrad-Dreirad	540	356	195	41,1	38,0	330	171	150
65 Leichtmotorfahrze ...	418			4,3	2,4			
24 Gelenktrolleybus	321			14,4	13,9			
82 Motoreinachser	294	180	8	38,2	46,9	174	156	119
37 Schweres Sattelmo ...	54	1		9,0	5,8	1		
84 Landw. Kombinati ...	25	24	4	53,6	58,9	22	20	20
36 Leichtes Sattelmo ...	4			19,4	19,1			

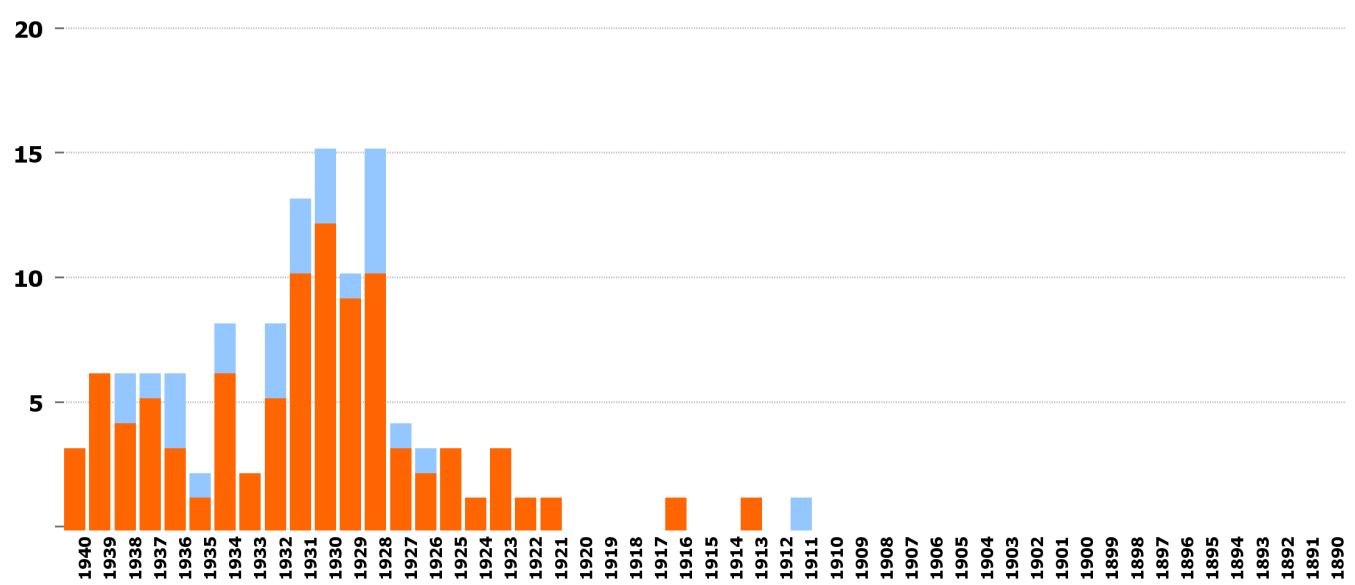
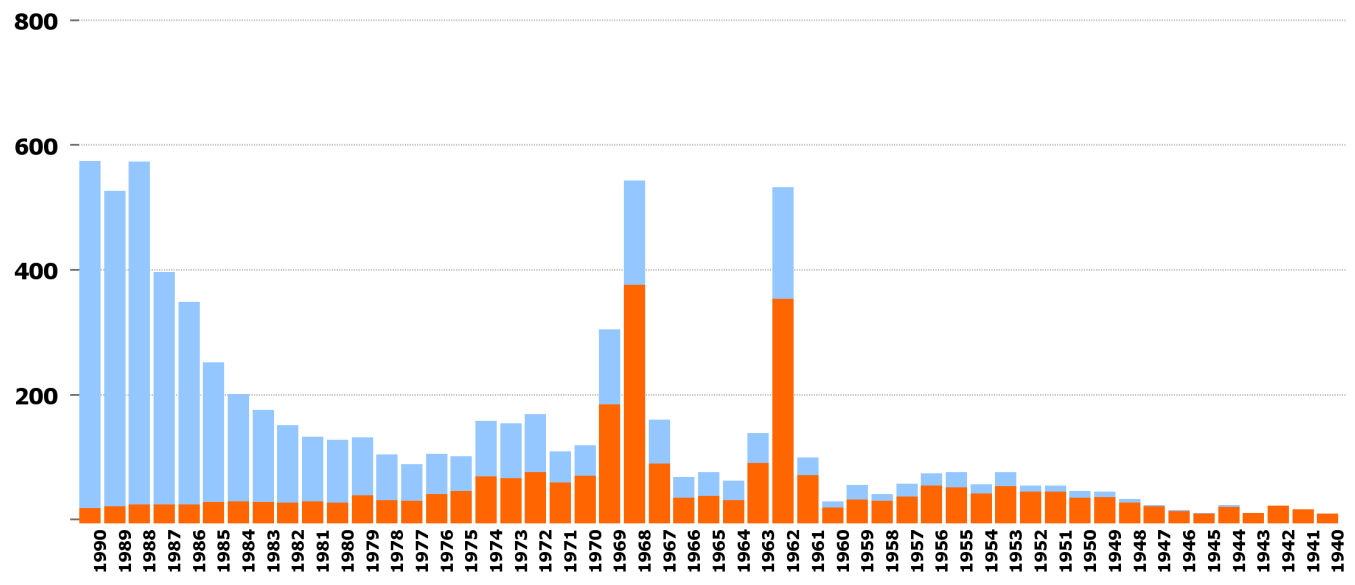
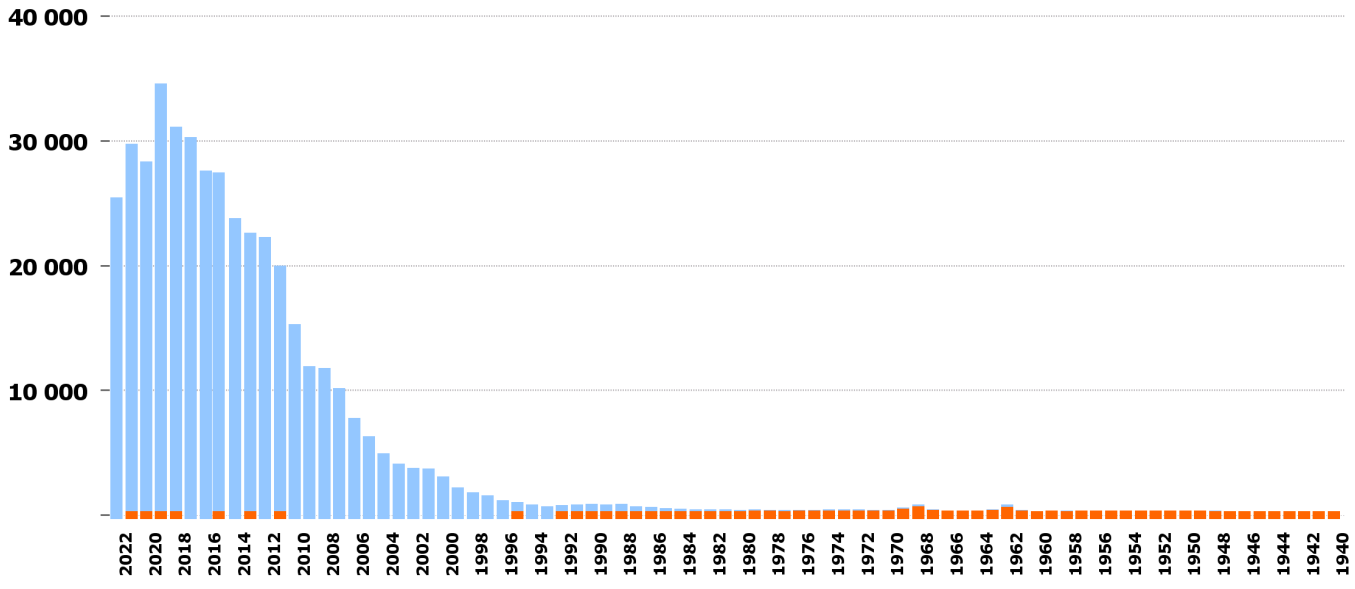
01 Personenwagen



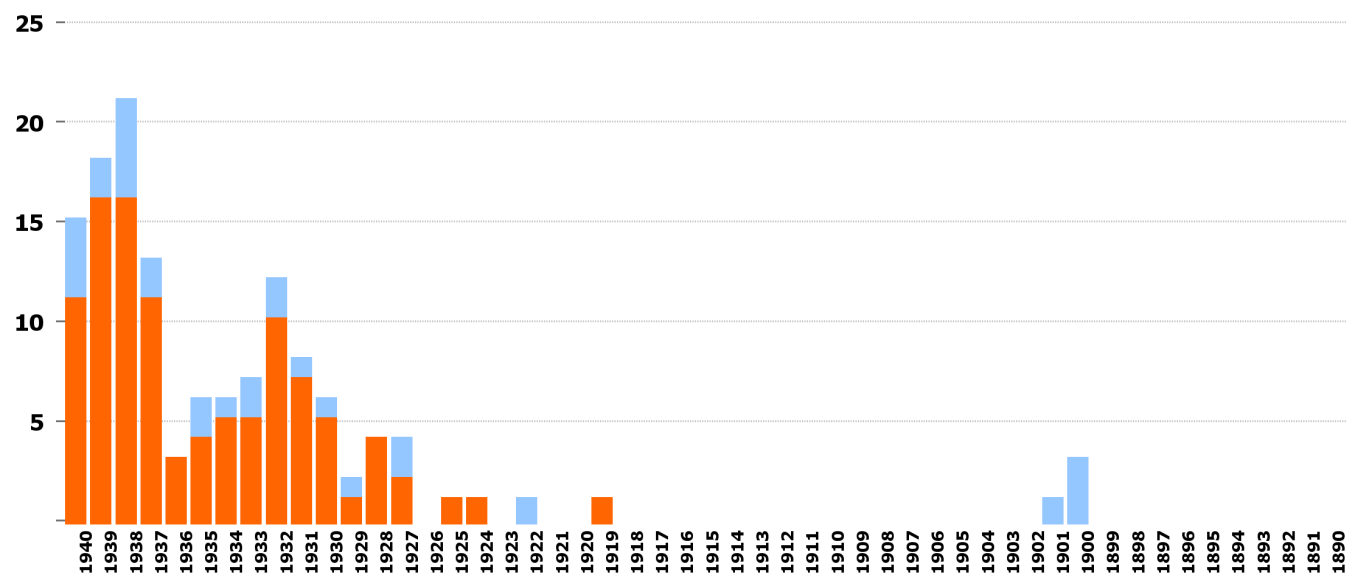
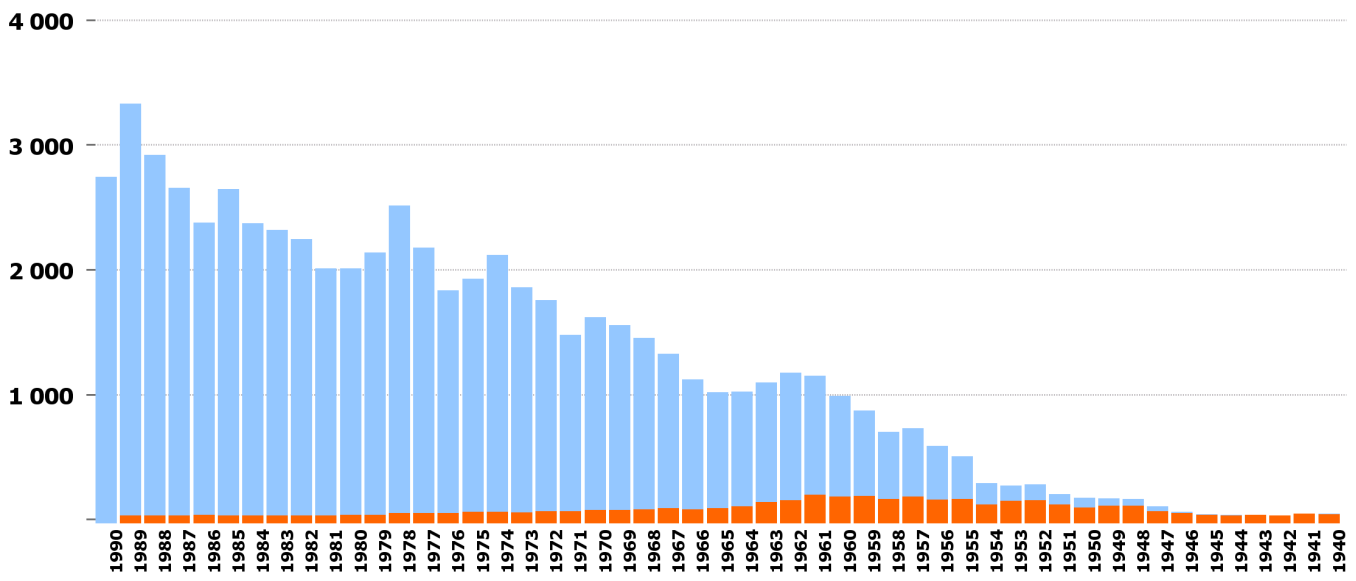
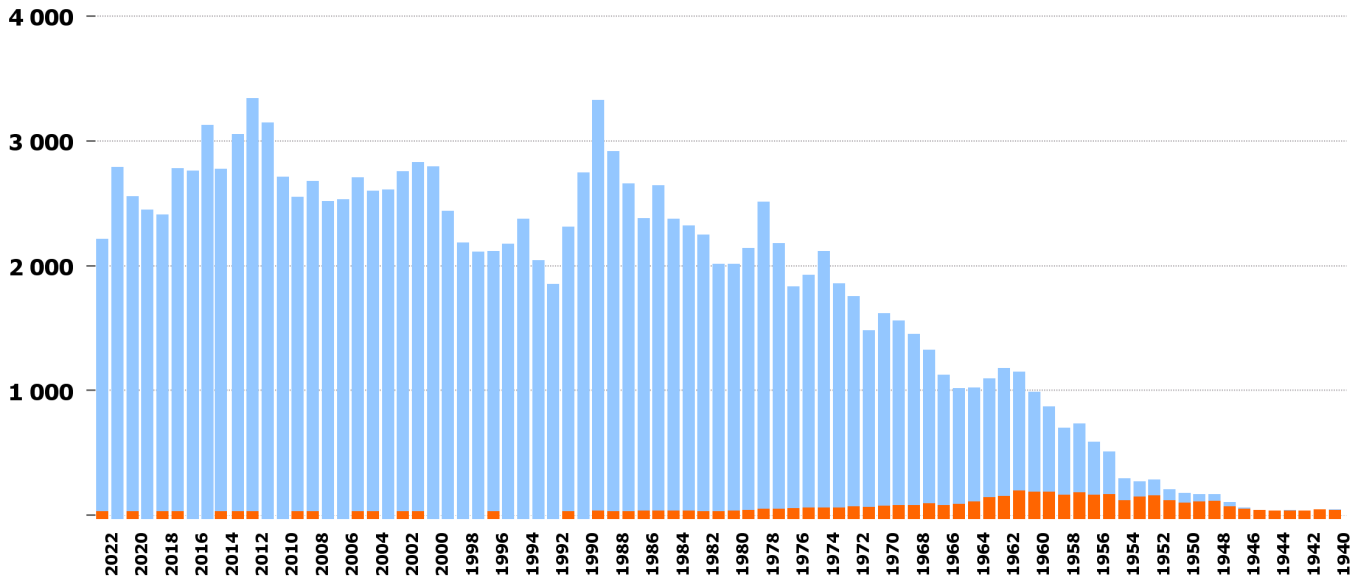
60 Motorrad



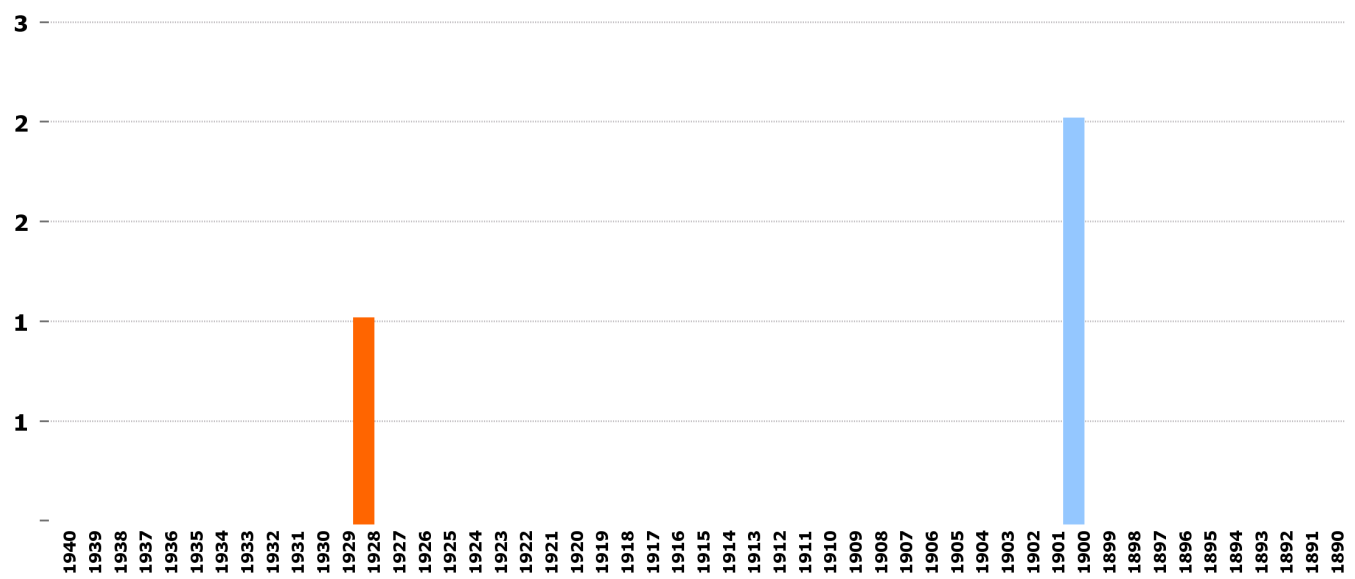
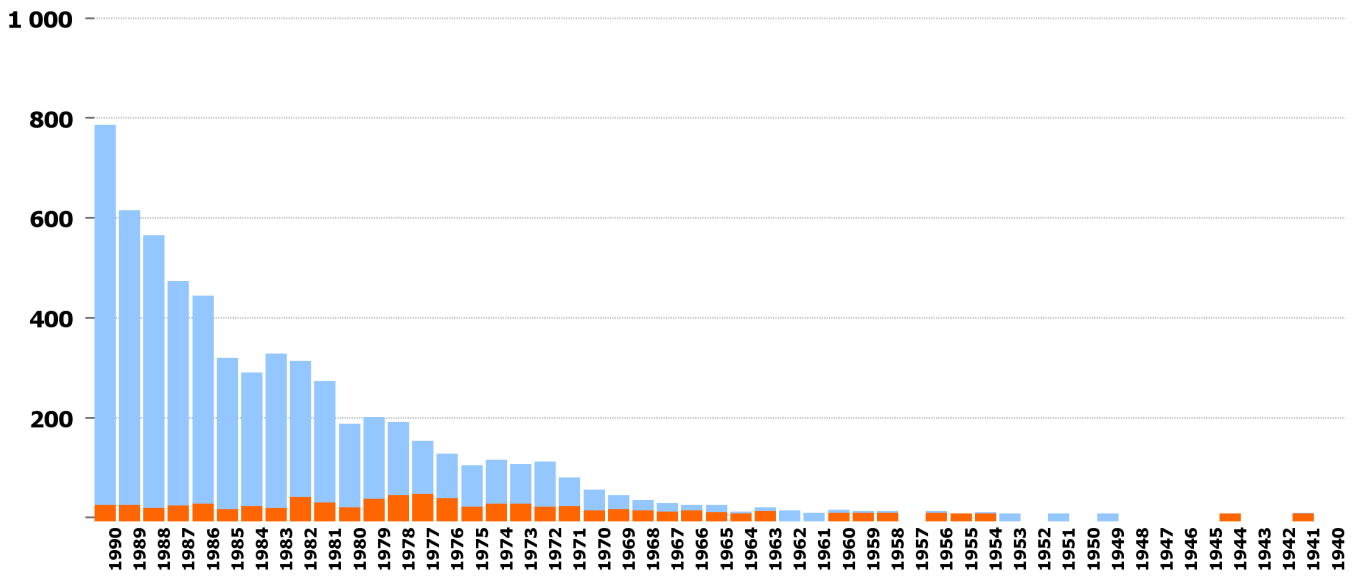
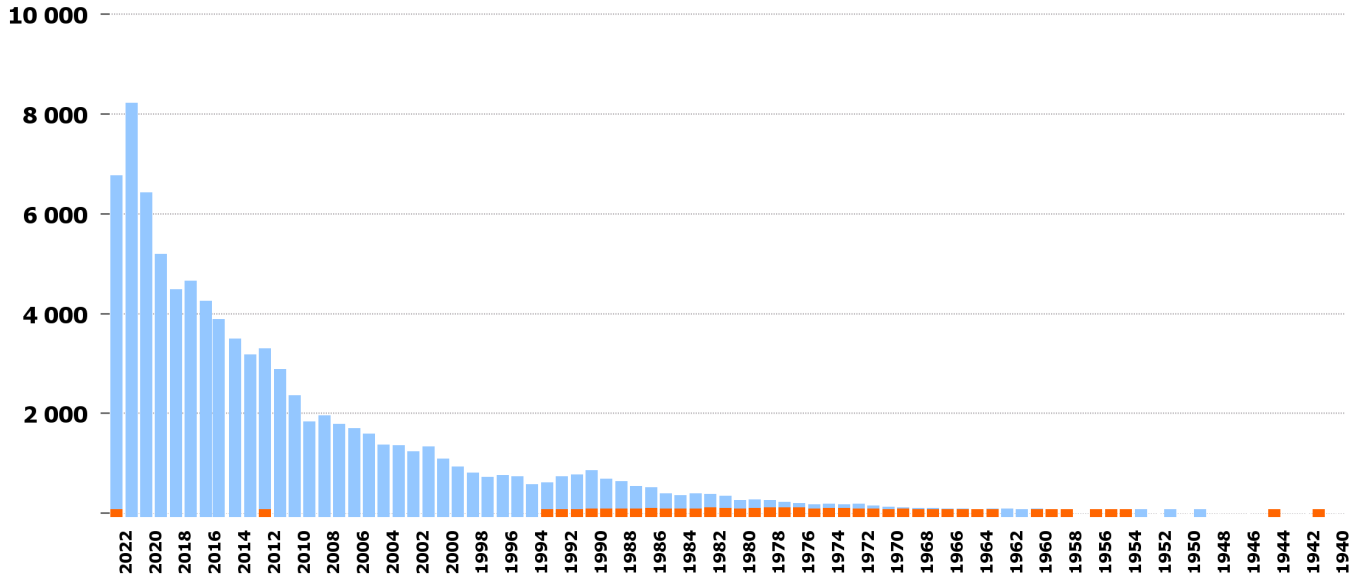
30 Lieferwagen



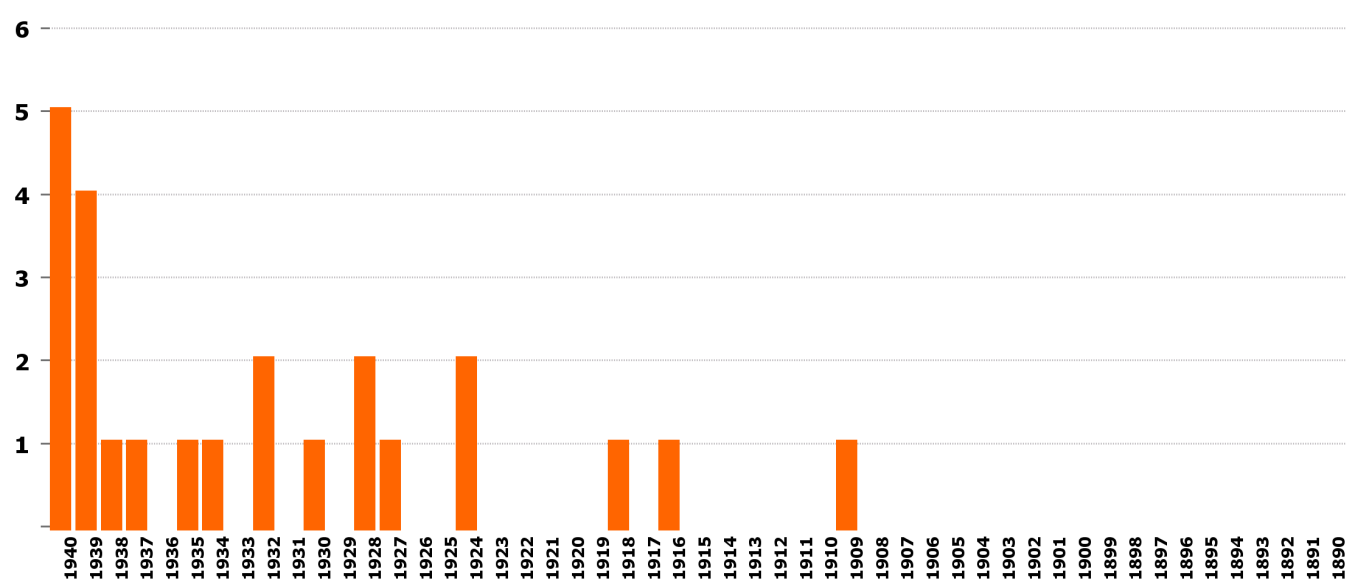
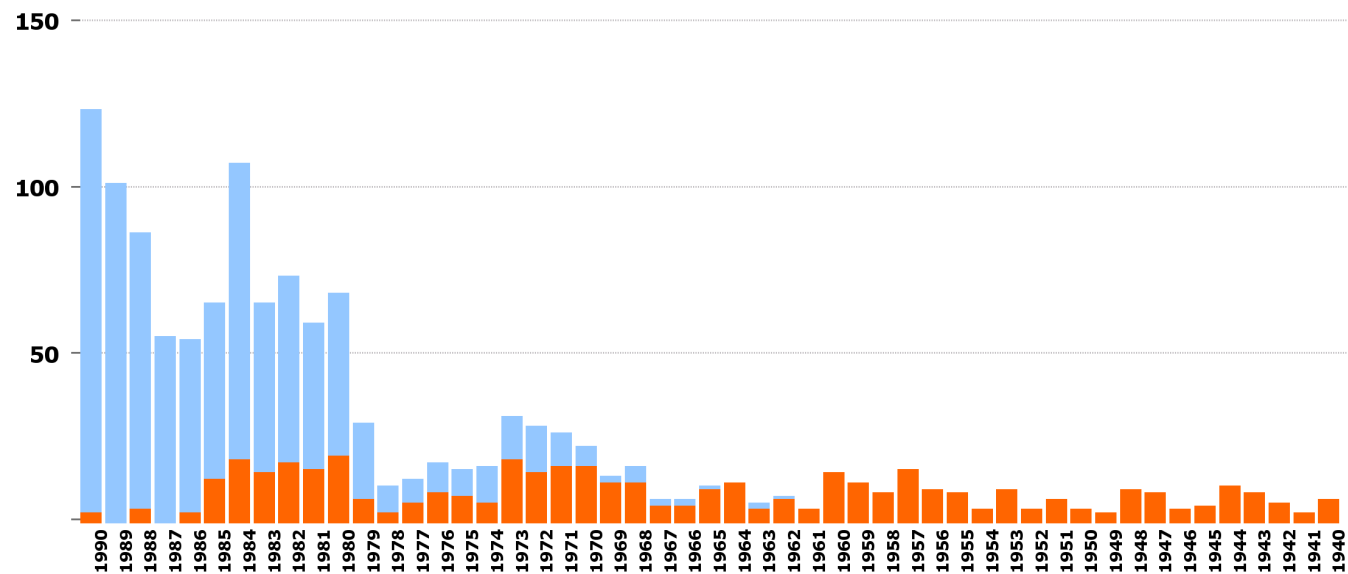
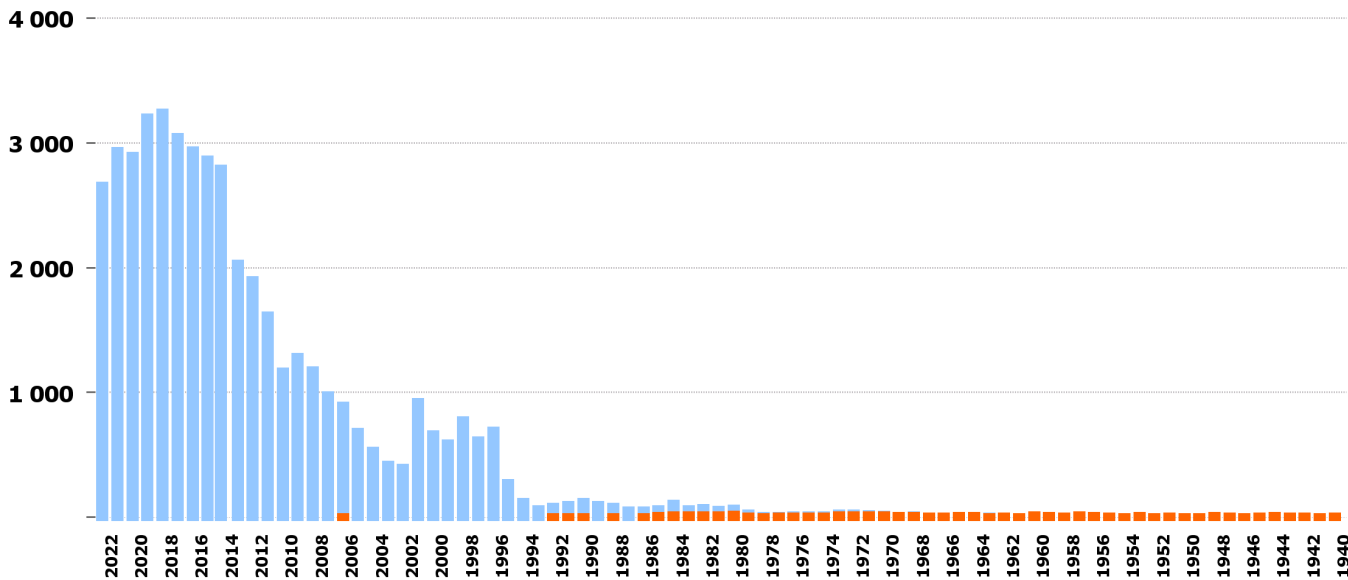
43 Landwirt. Traktor



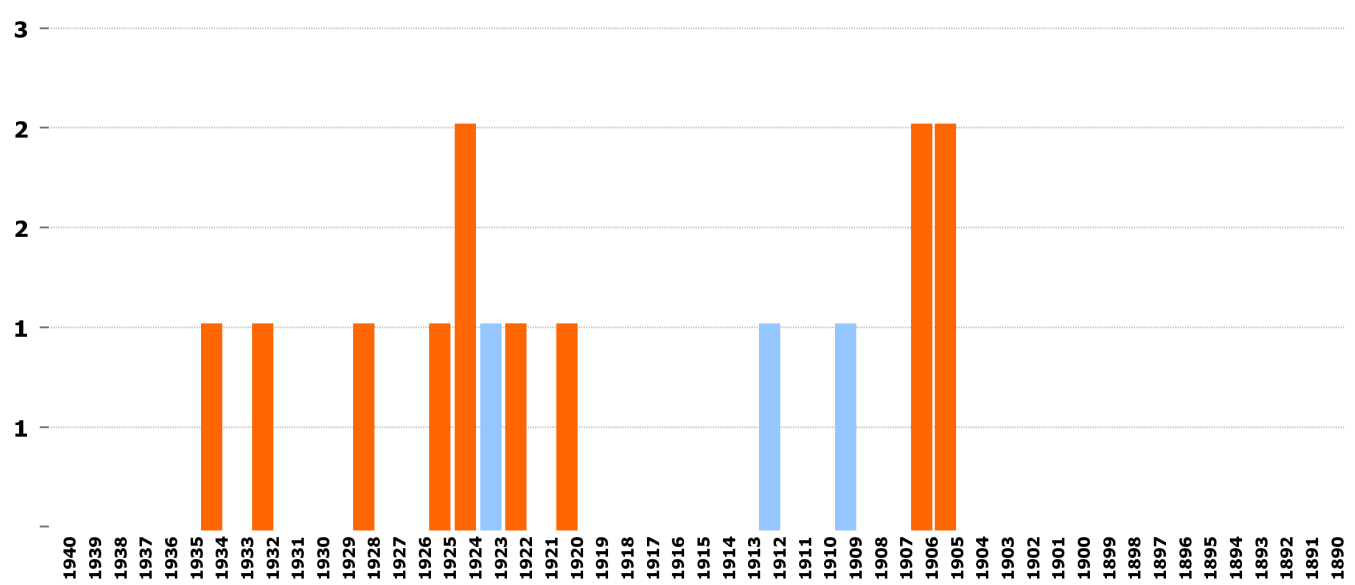
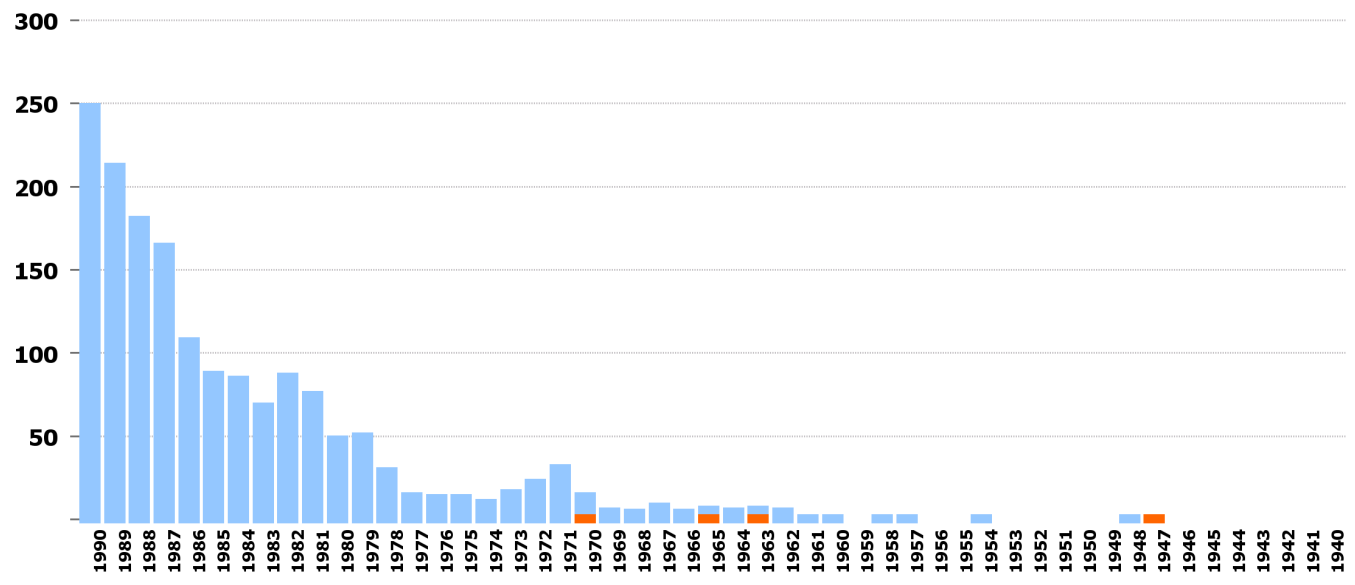
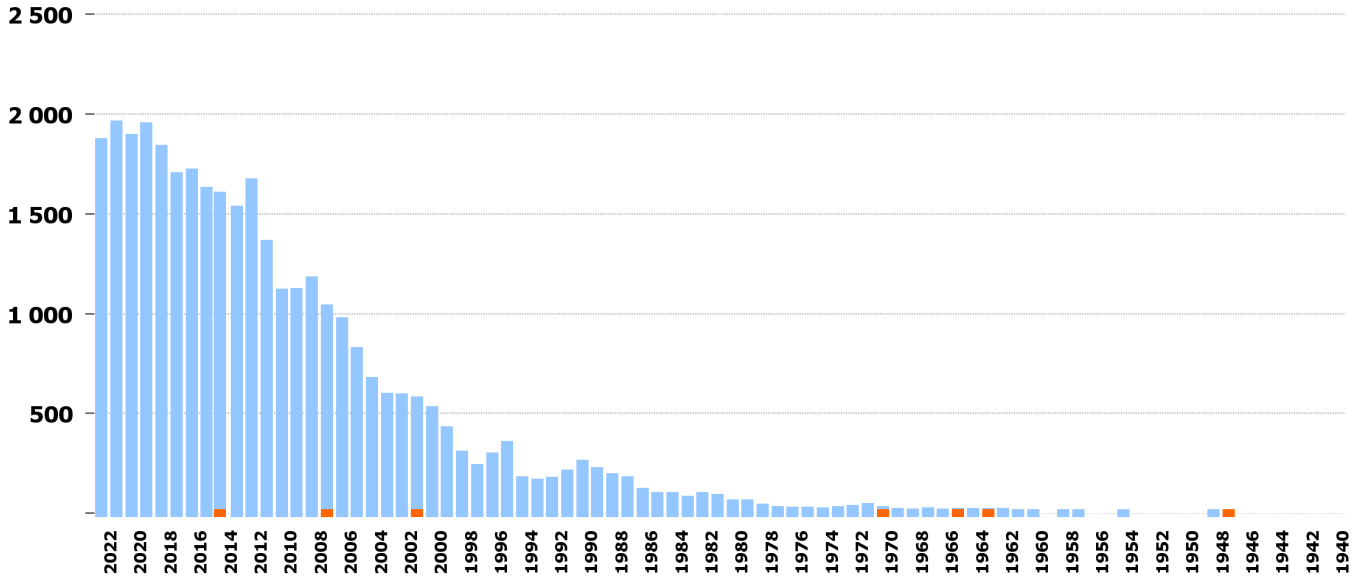
10 Leichter Motorwagen



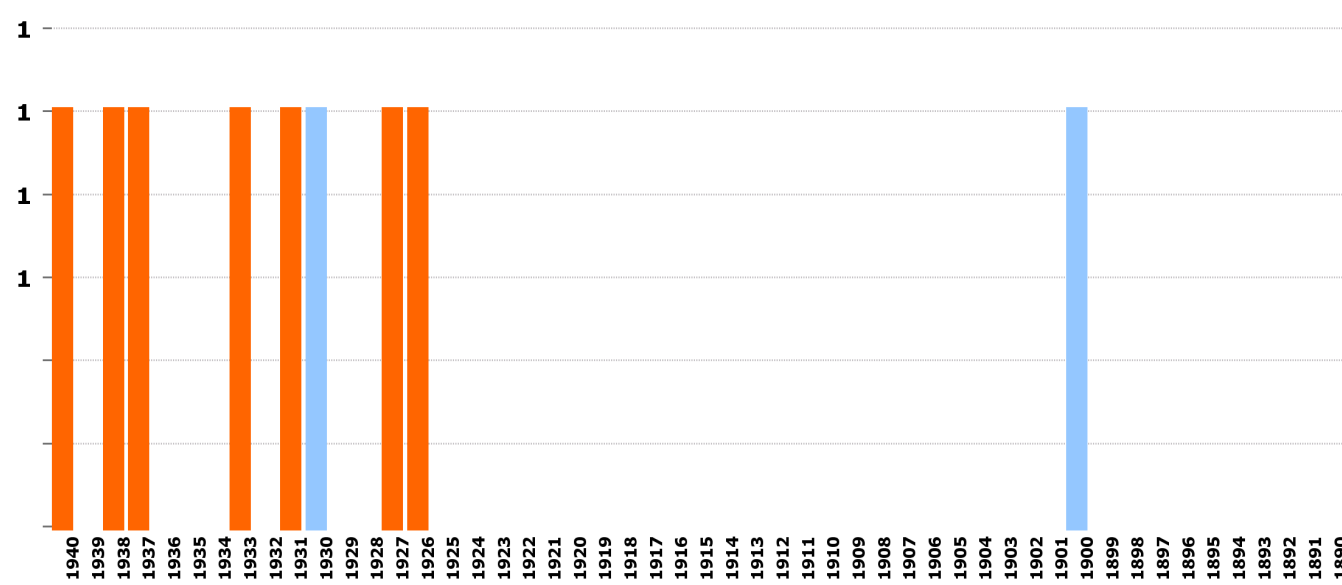
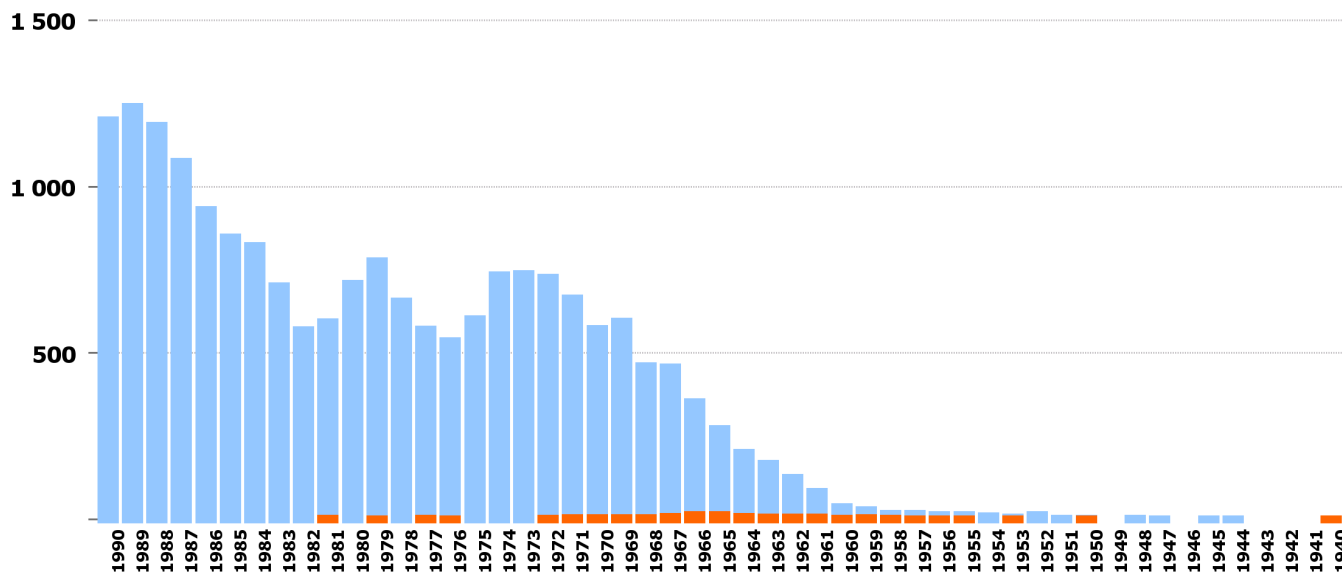
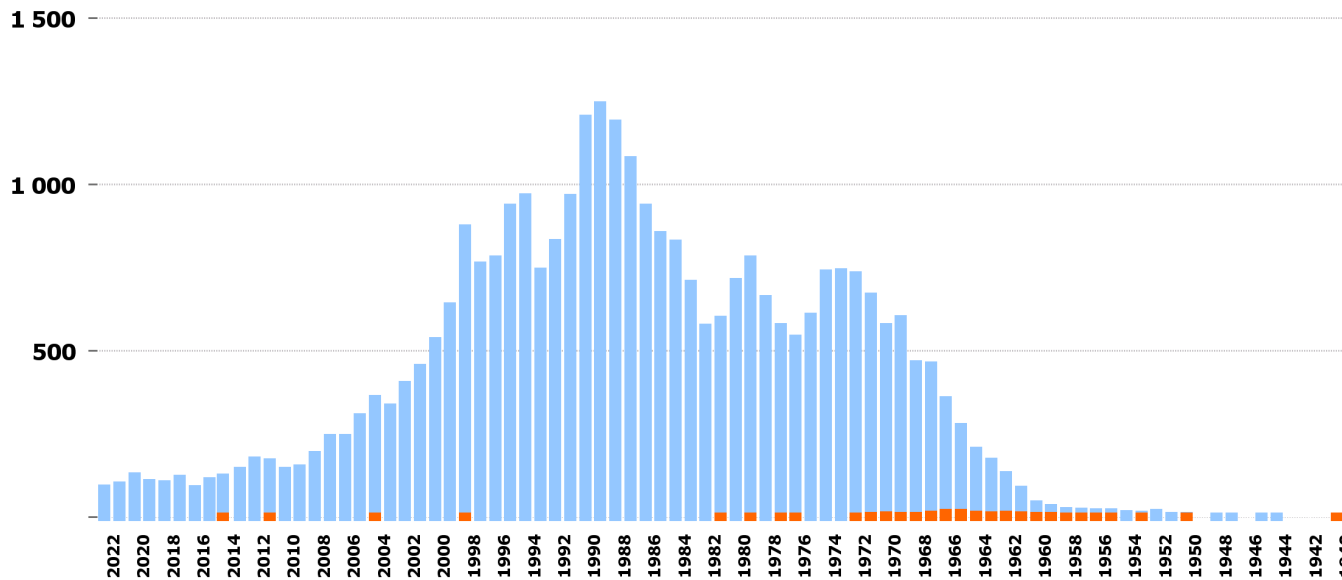
35 Lastwagen



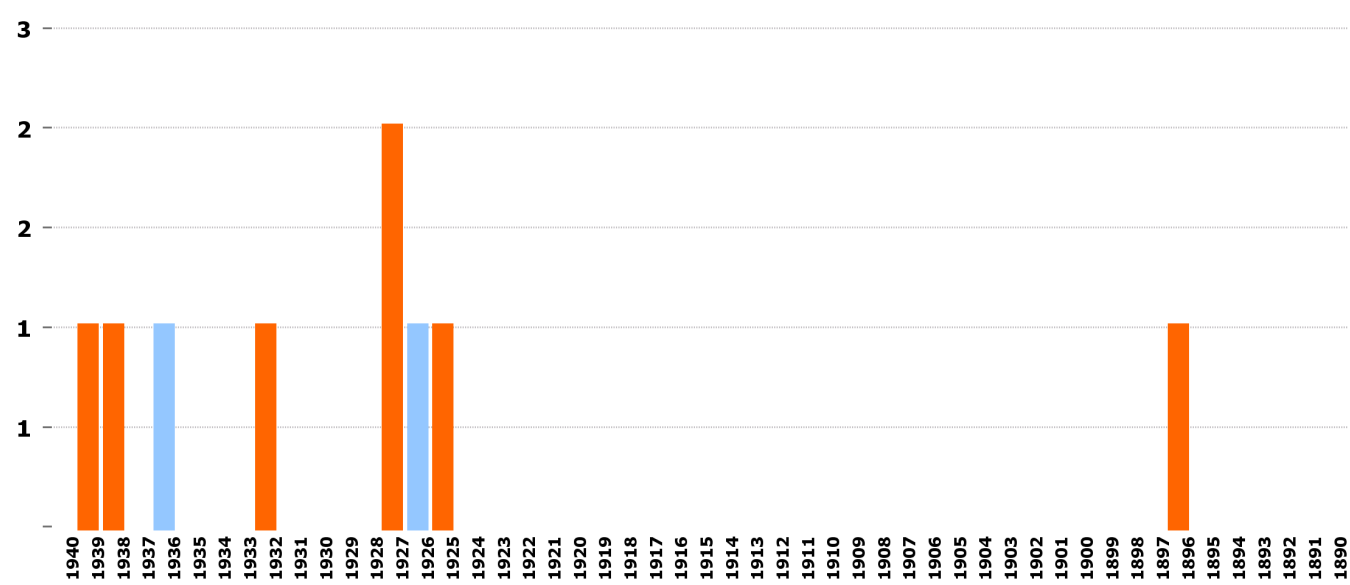
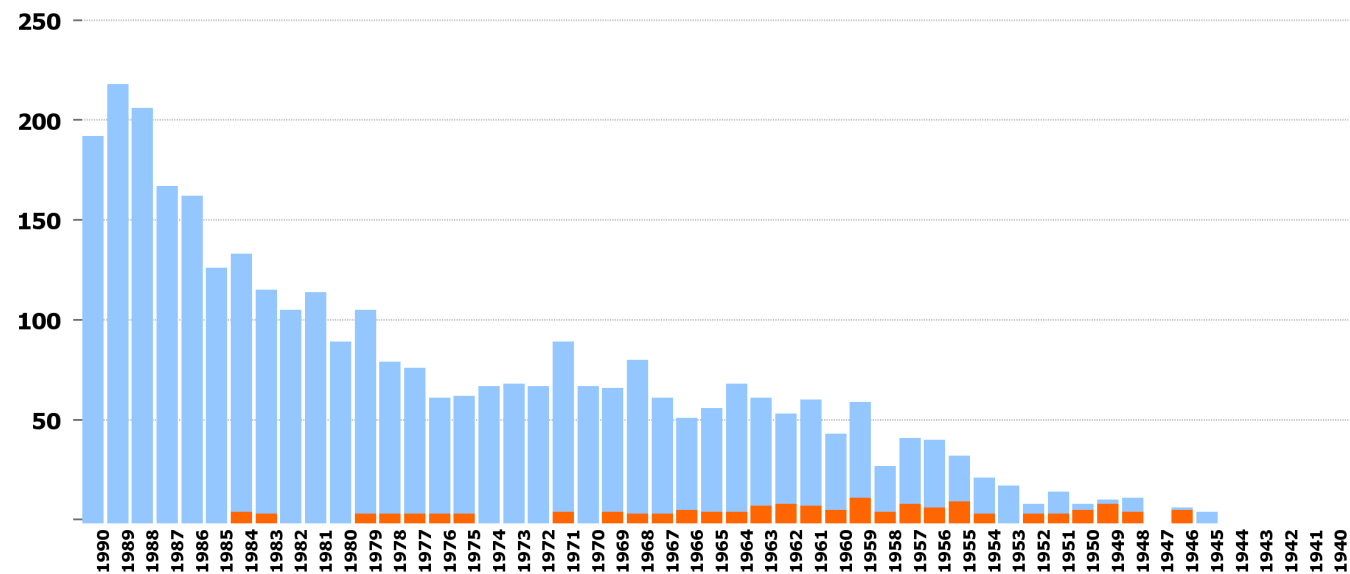
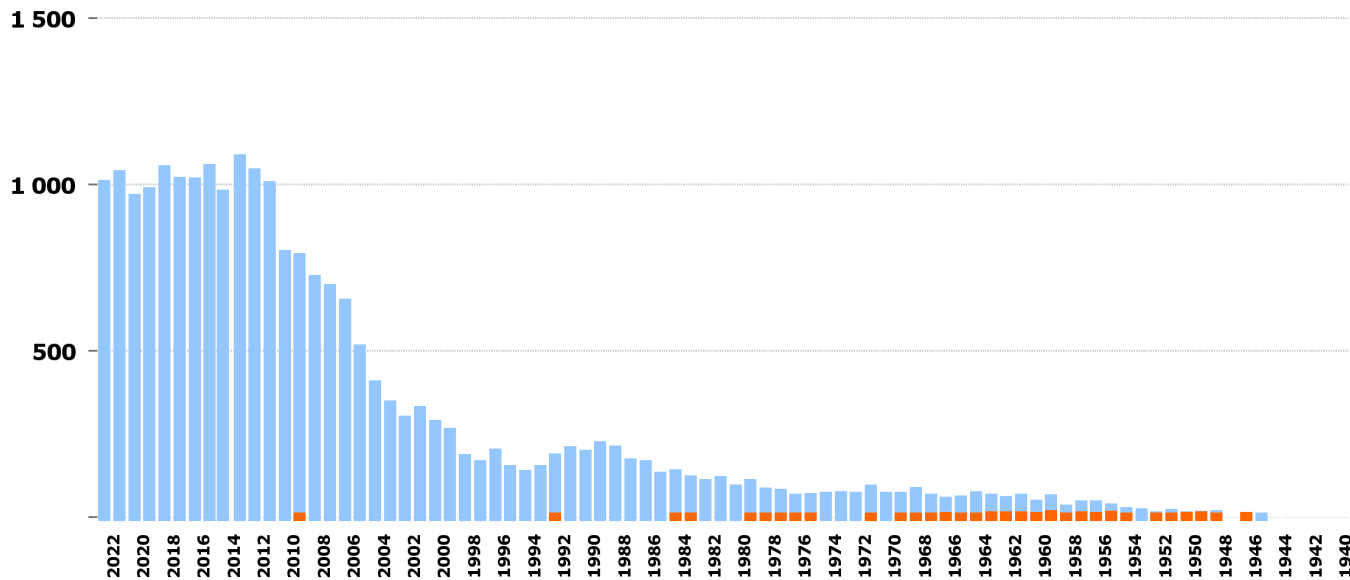
51 Arbeitskarren



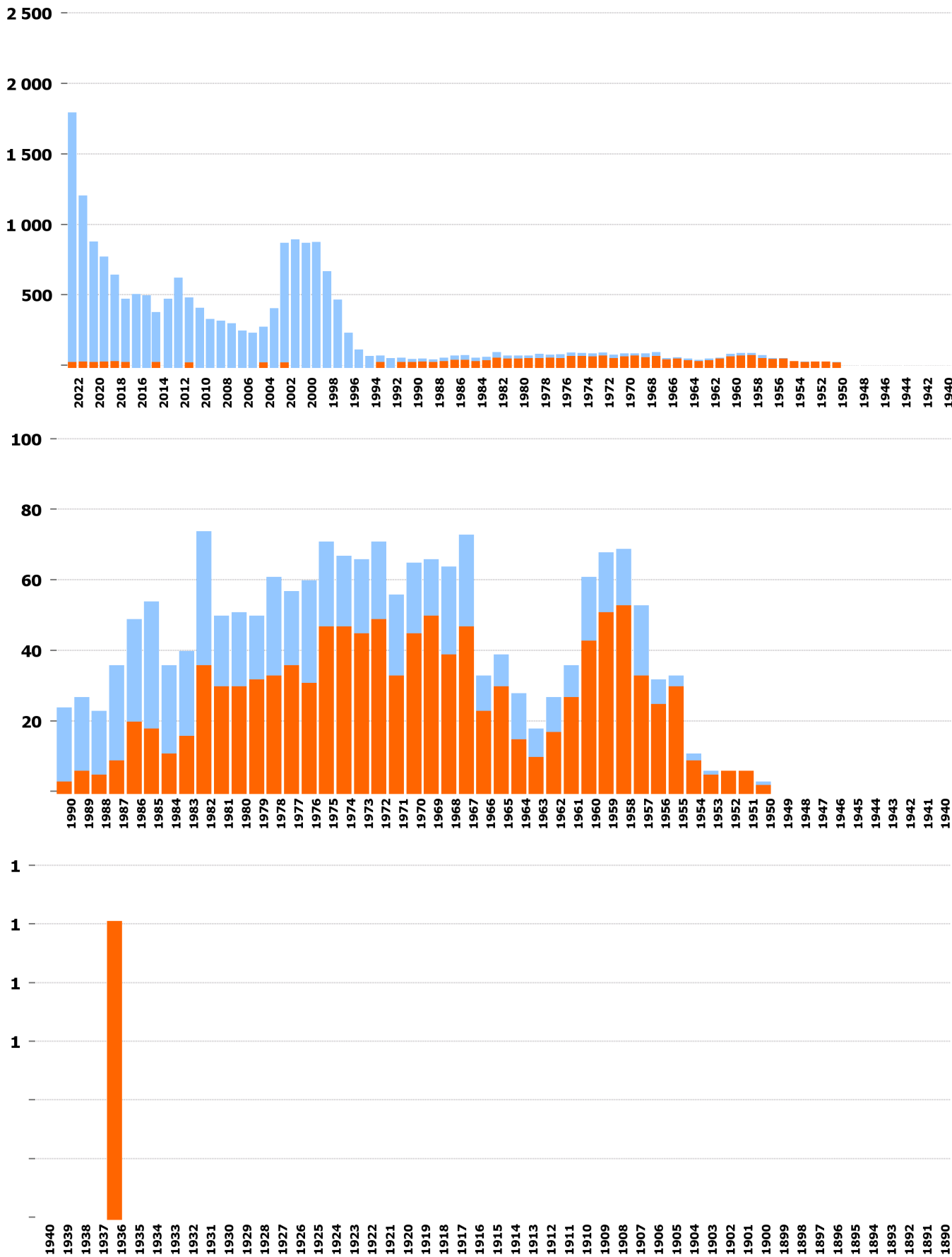
81 Landw. Motorkarren



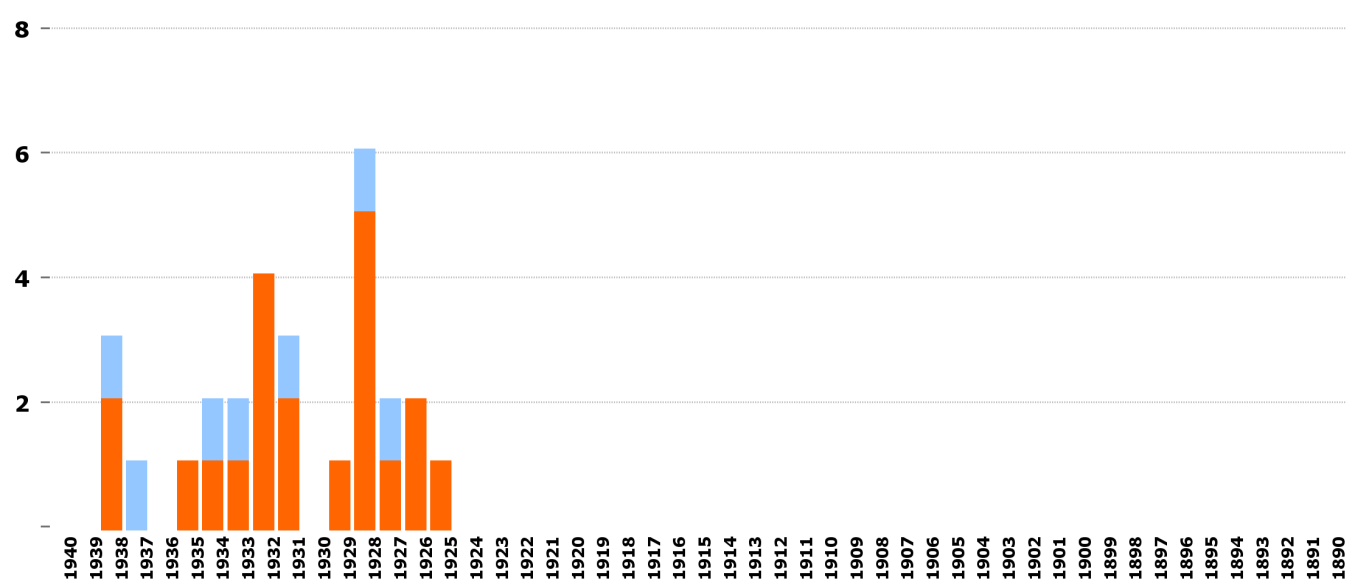
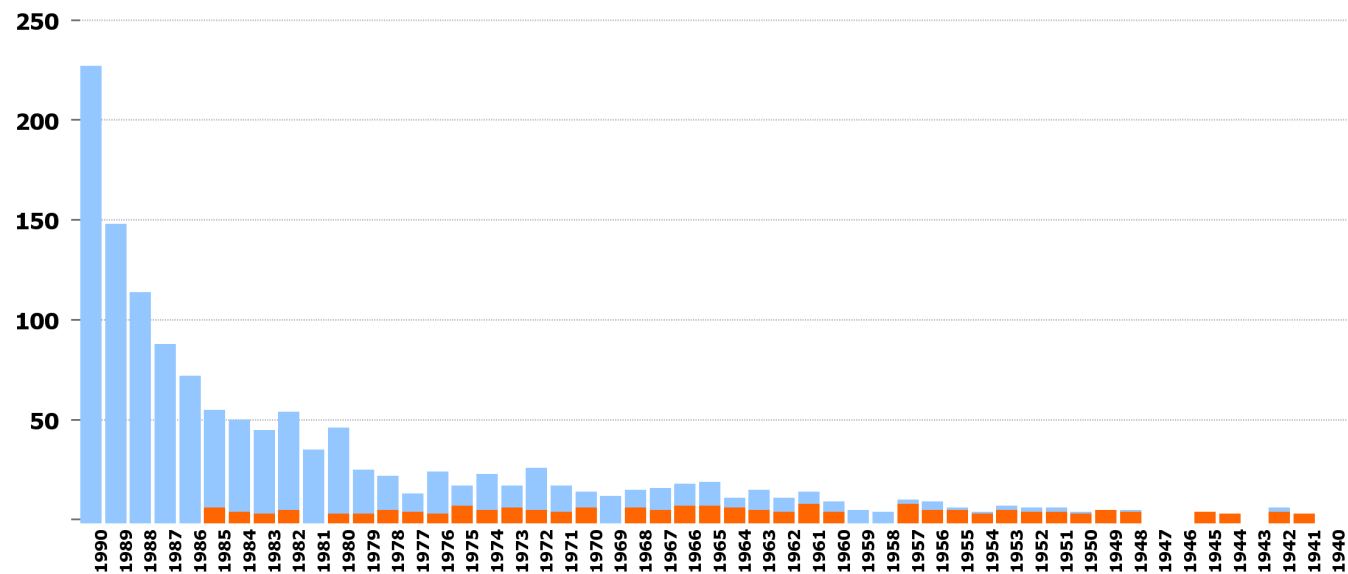
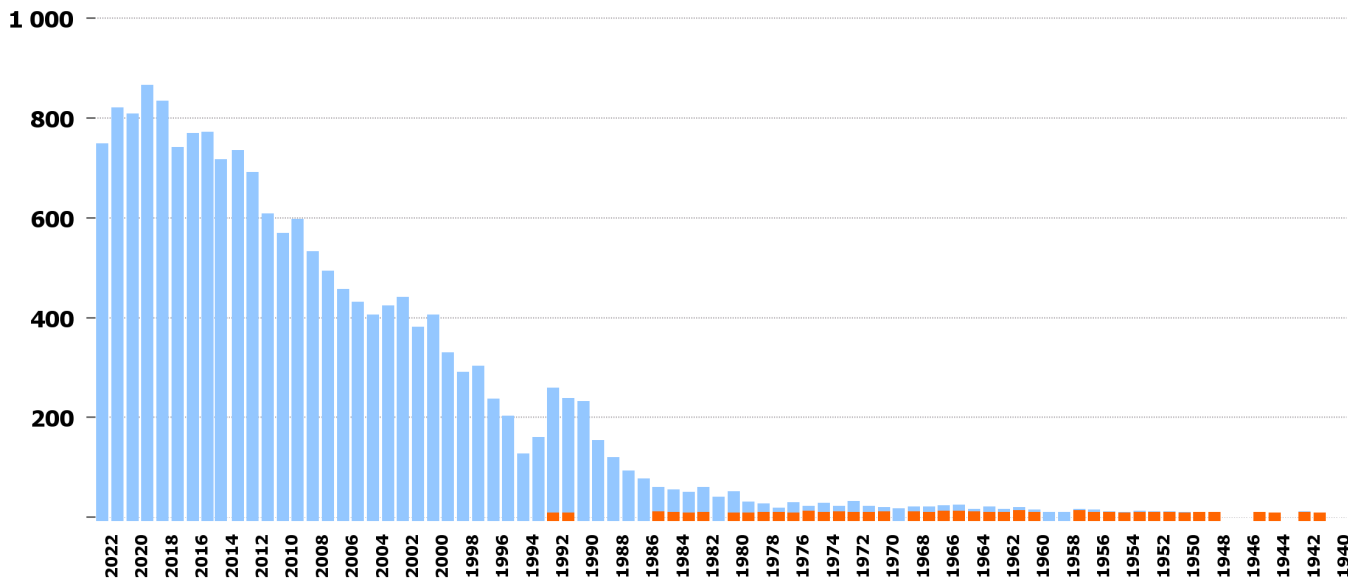
80 Motorkarren



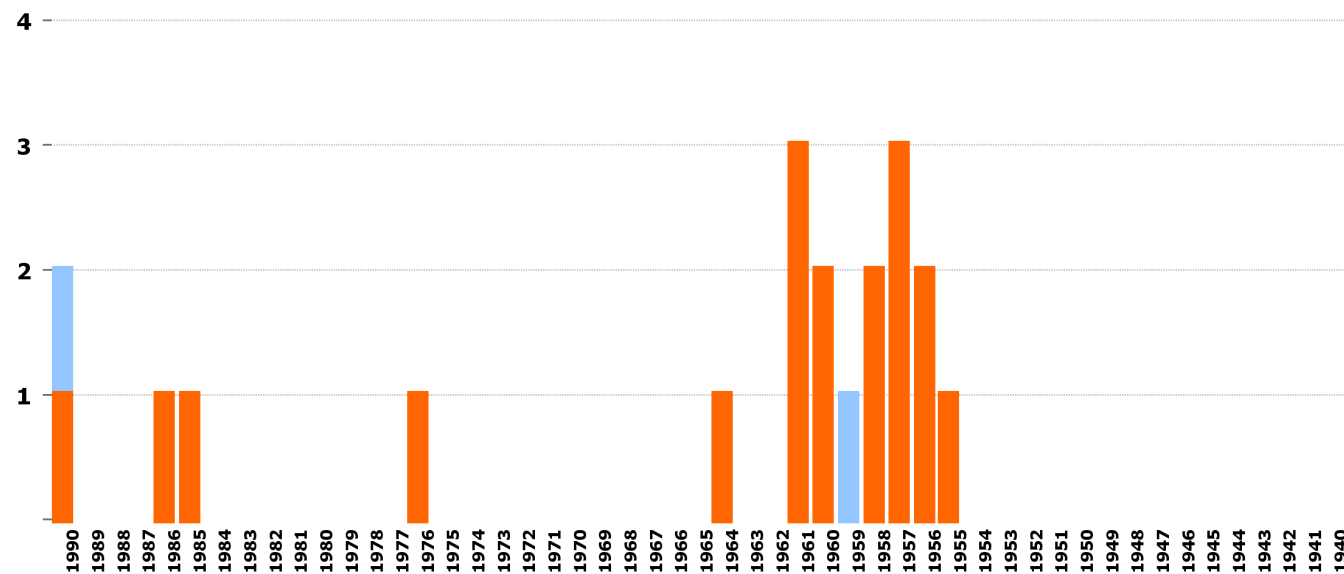
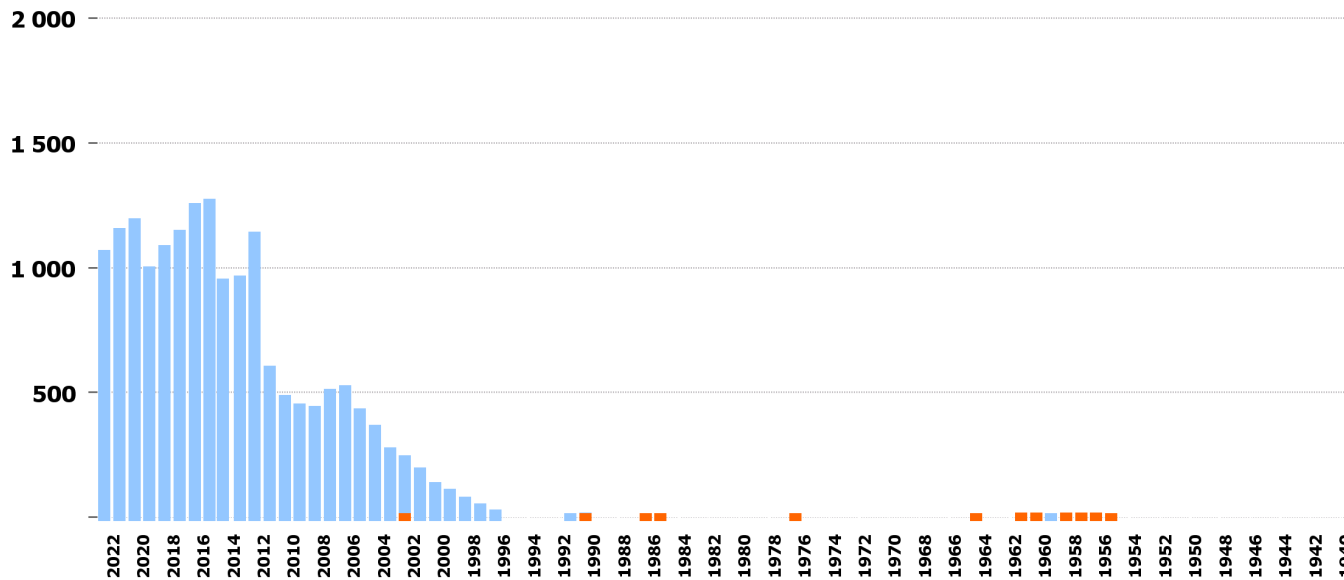
61 Kleinmotorrad



50 Arbeitsmaschine

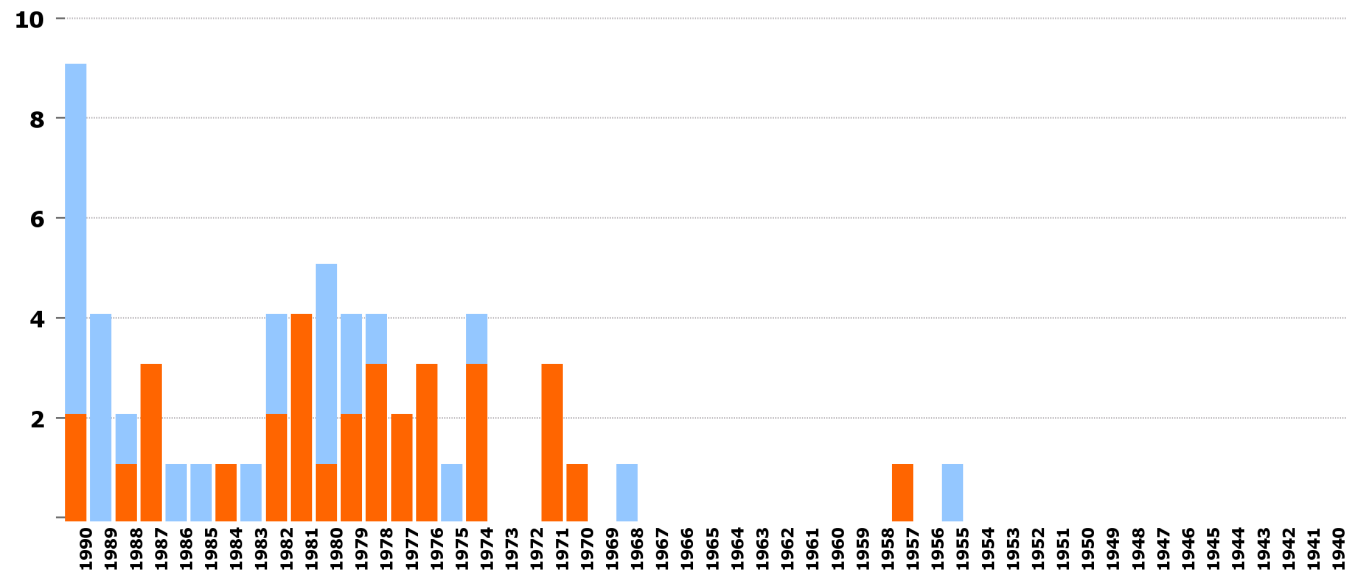
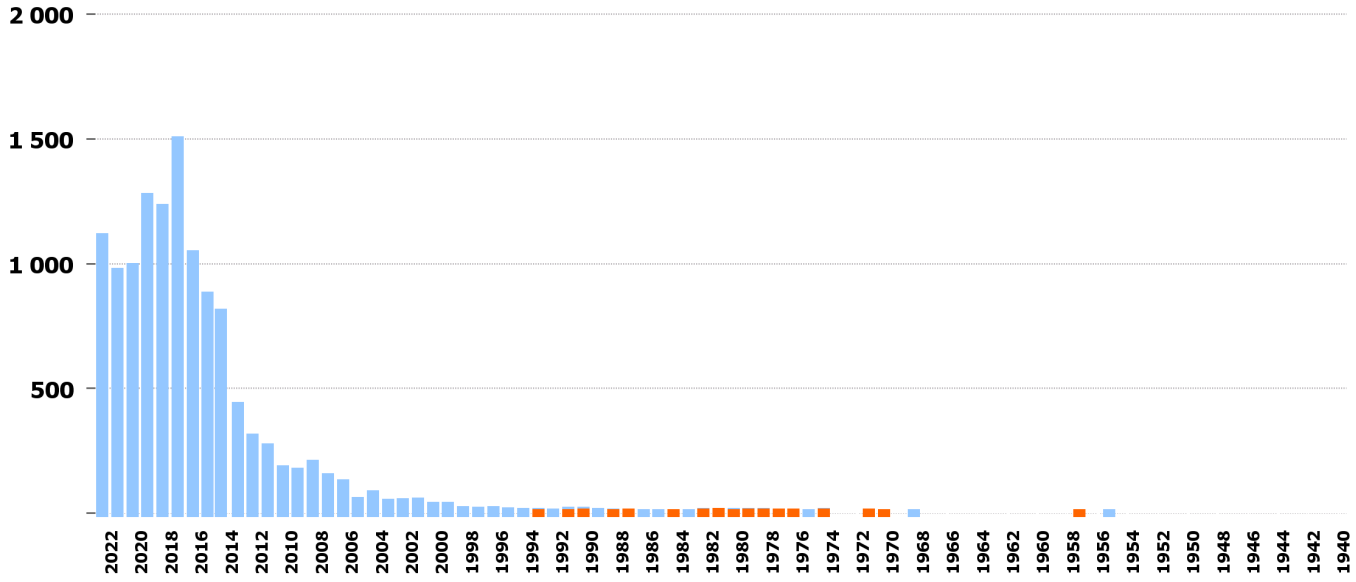


66 Kleinmotorfahrzeug



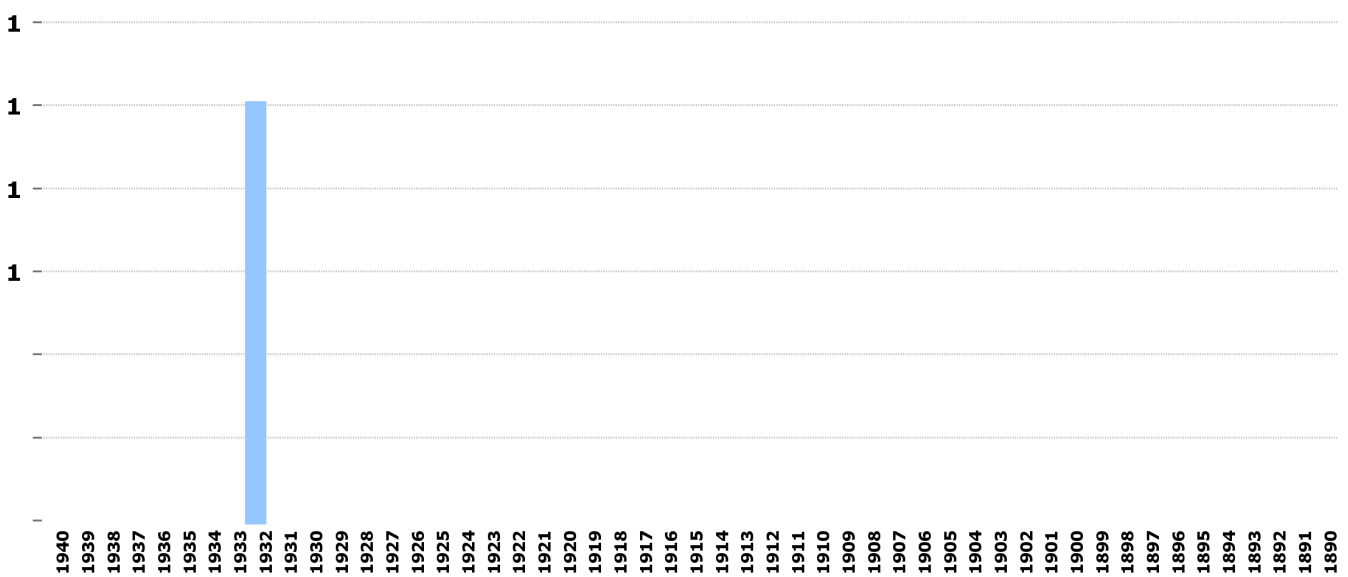
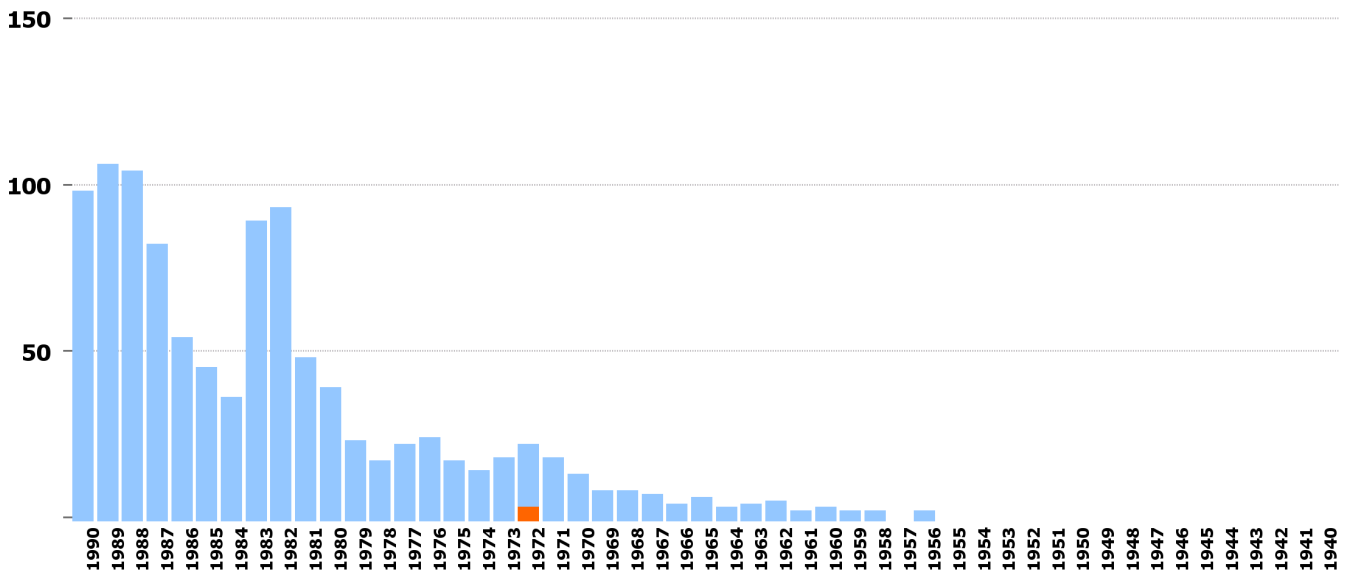
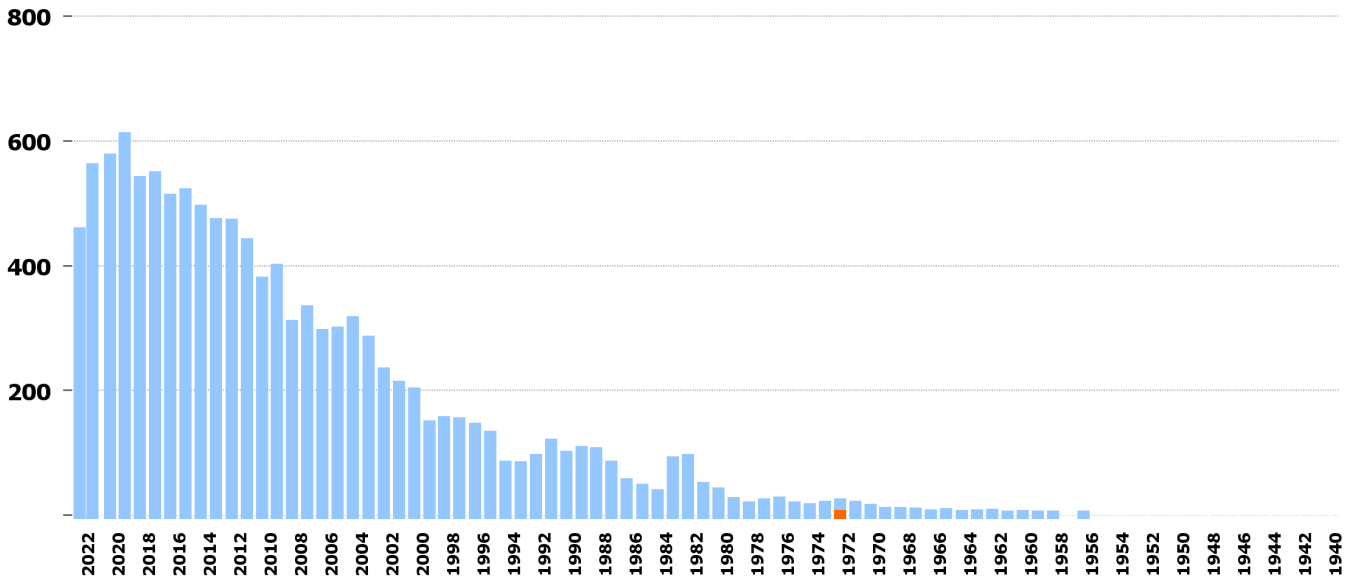
1940 1939 1938 1937 1936 1935 1934 1933 1932 1931 1930 1929 1928 1927 1926 1925 1924 1923 1922 1921 1920 1919 1918 1917 1916 1915 1914 1913 1912 1911 1910 1909 1908 1907 1906 1905 1904 1903 1902 1901 1900 1899 1898 1897 1896 1895 1894 1893 1892 1891 1890

38 Sattelschlepper

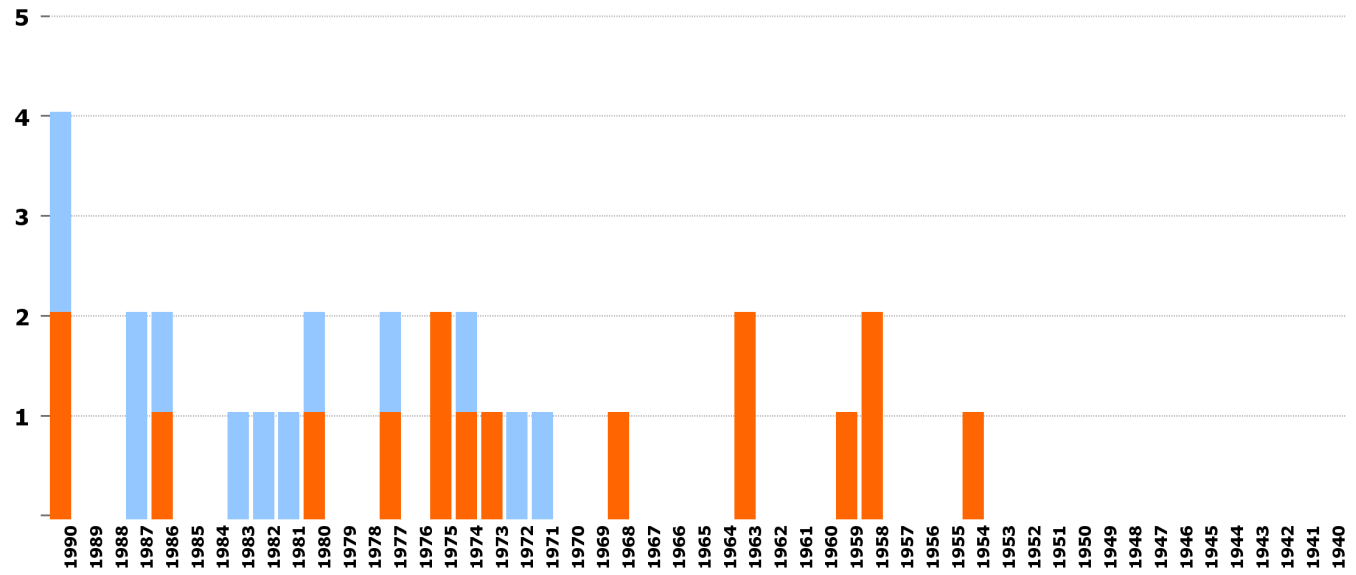
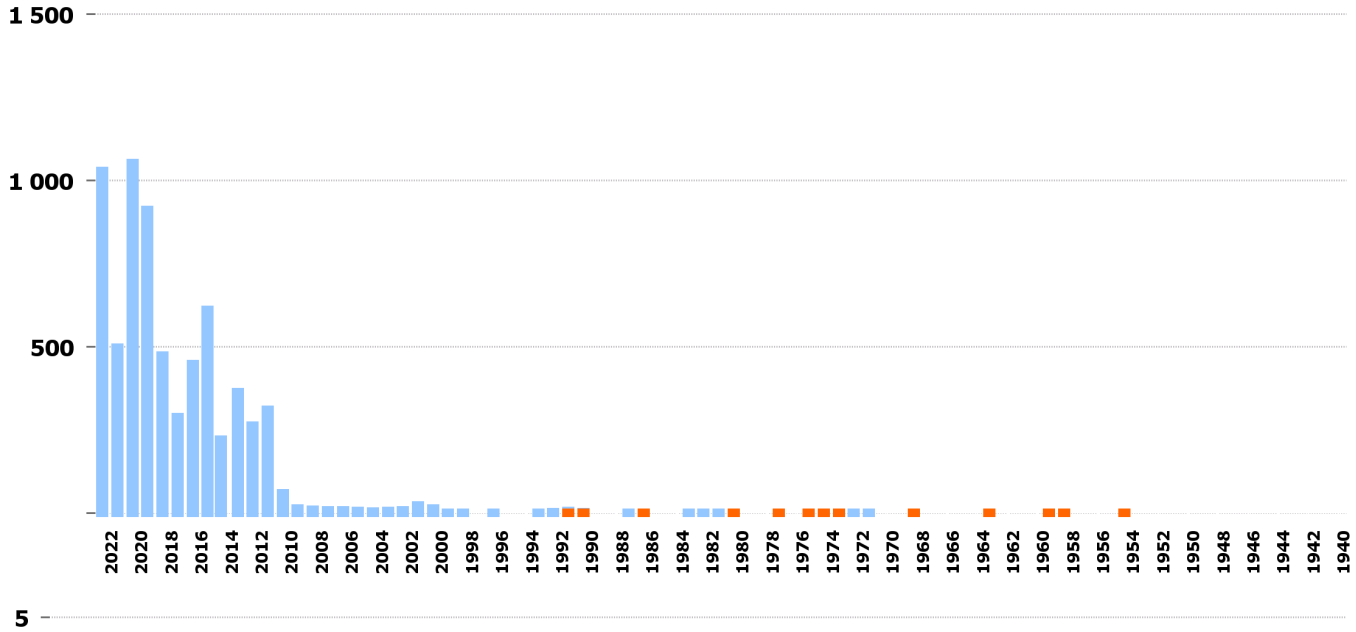


1940
1939
1938
1937
1936
1935
1934
1933
1932
1931
1930
1929
1928
1927
1926
1925
1924
1923
1922
1921
1920
1919
1918
1917
1916
1915
1914
1913
1912
1911
1910
1909
1908
1907
1906
1905
1904
1903
1902
1901
1900
1899
1898
1897
1896
1895
1894
1893
1892
1891
1890

52 Landw. Arbeitskarren

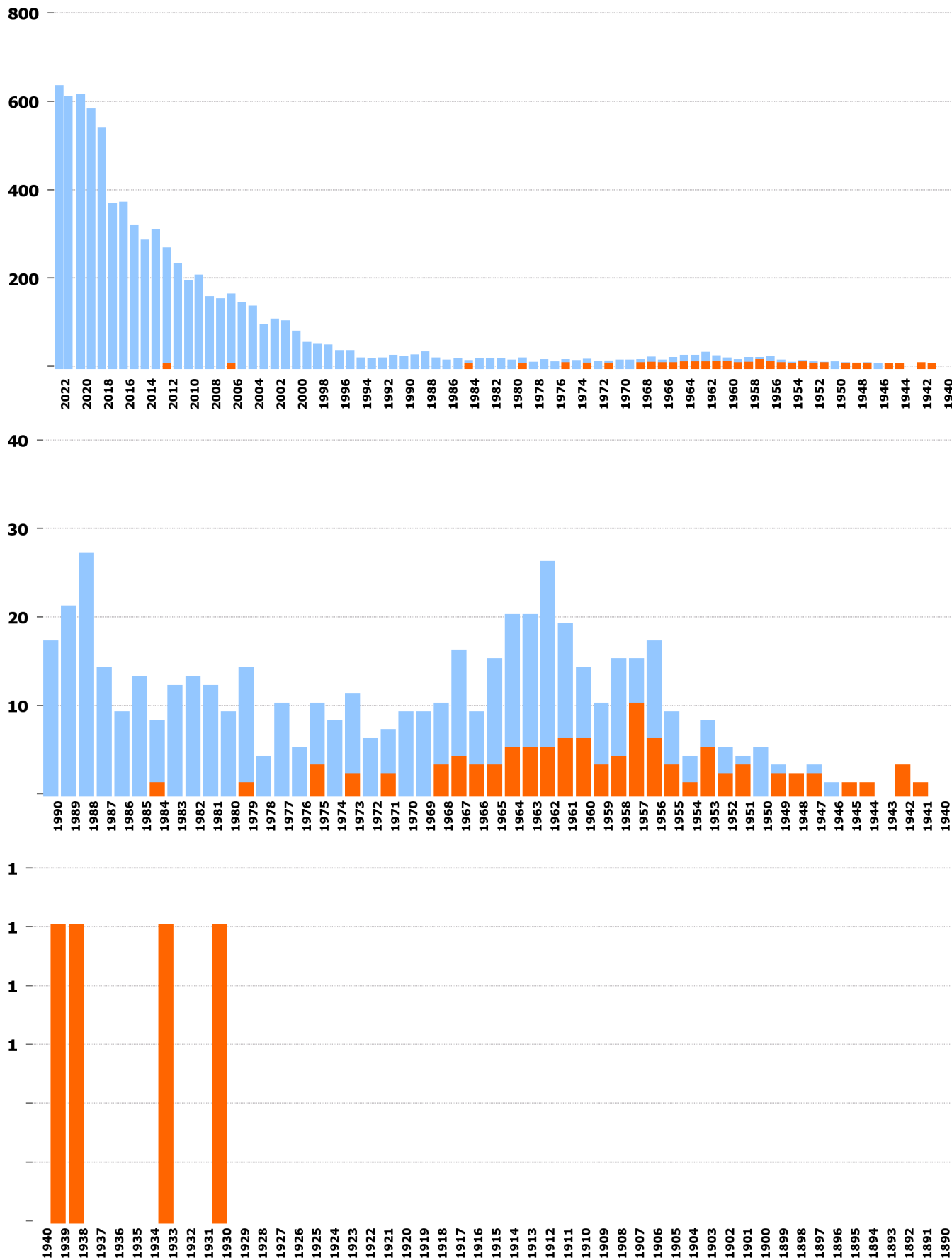


64 Kleinmotorrad-Dreirad

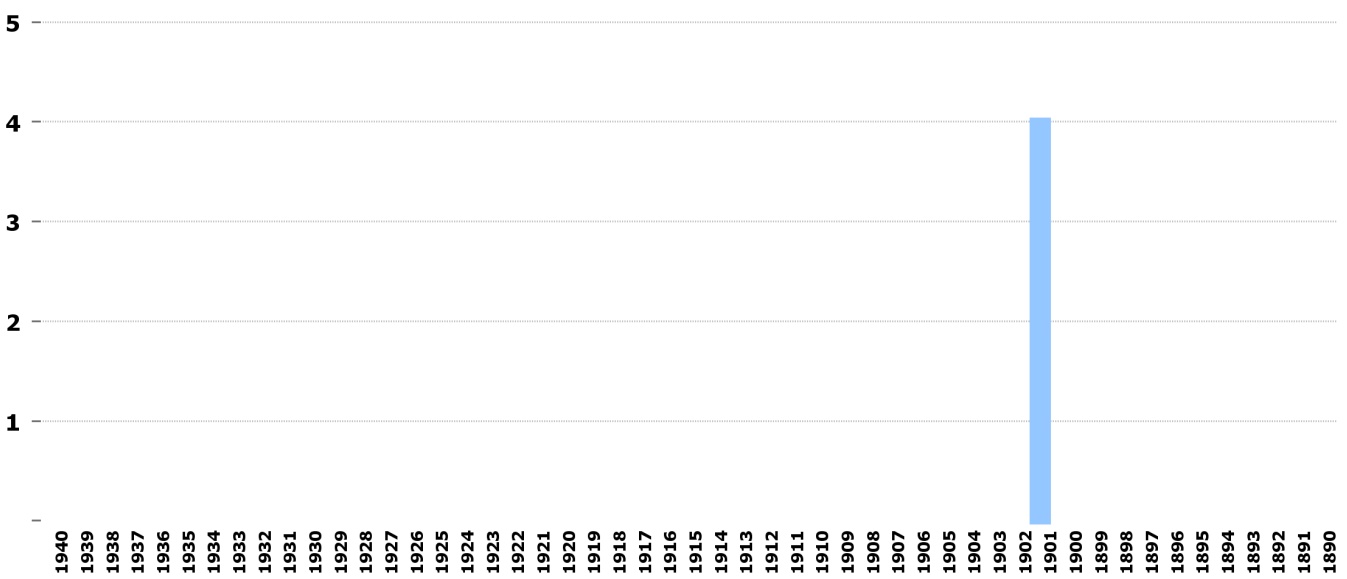
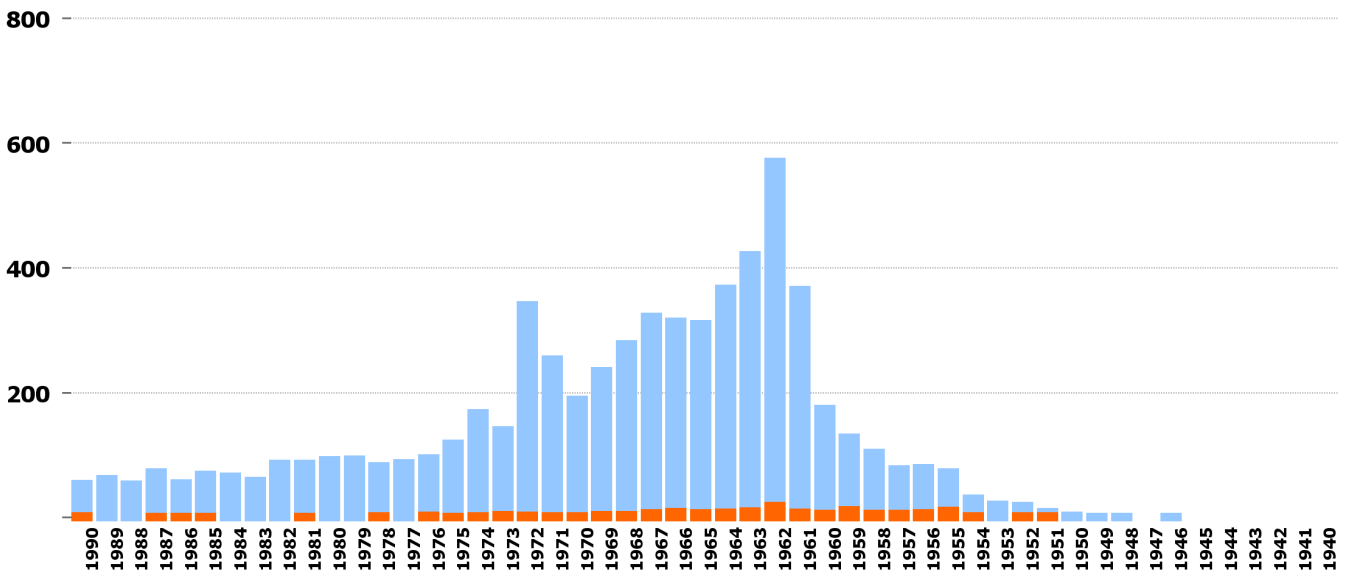
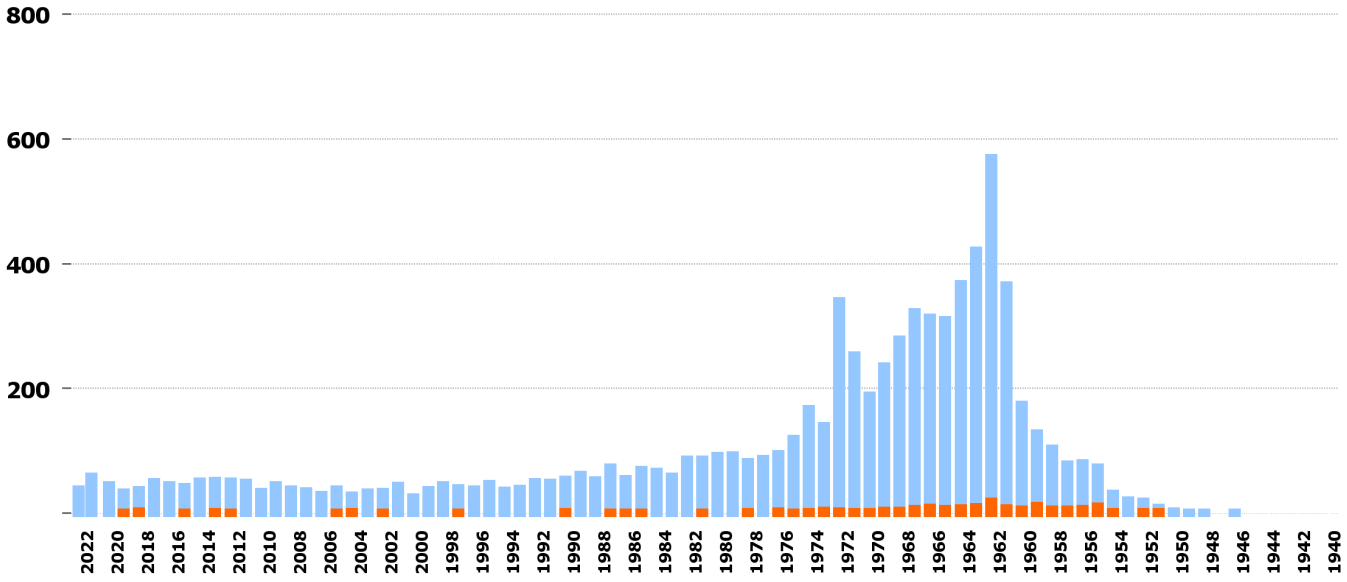


1940 1939 1938 1937 1936 1935 1934 1933 1932 1931 1930 1929 1928 1927 1926 1925 1924 1923 1922 1921 1920 1919 1918 1917 1916 1915 1914 1913 1912 1911 1910 1909 1908 1907 1906 1905 1904 1903 1902 1901 1900 1899 1898 1897 1896 1895 1894 1893 1892 1891 1890

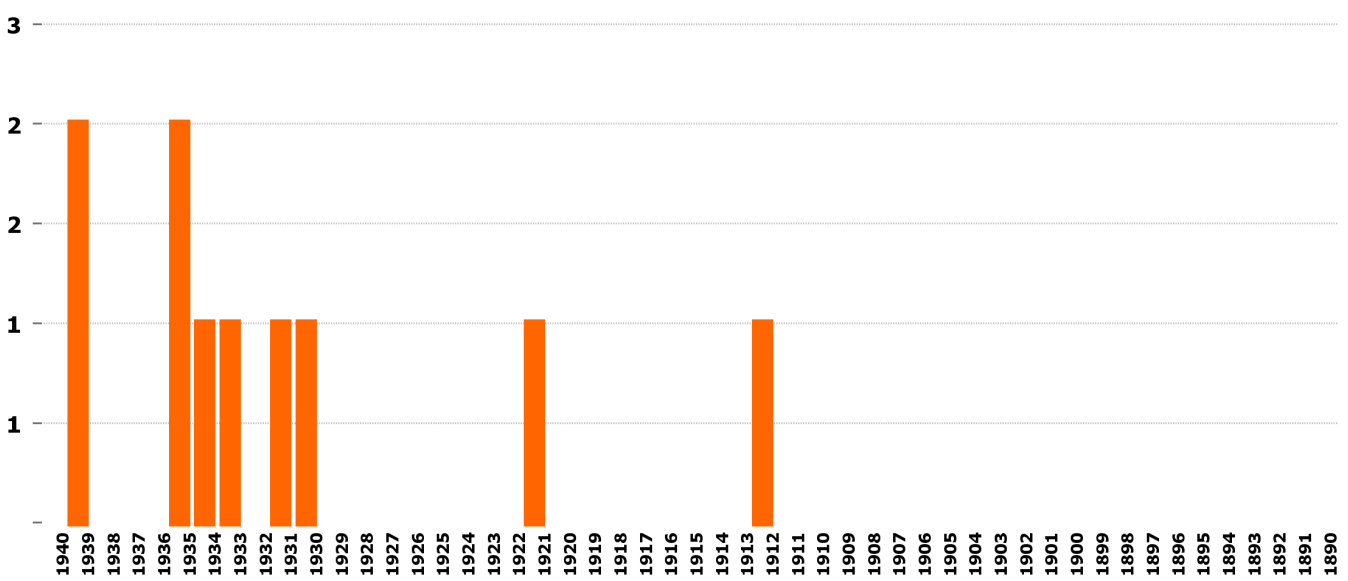
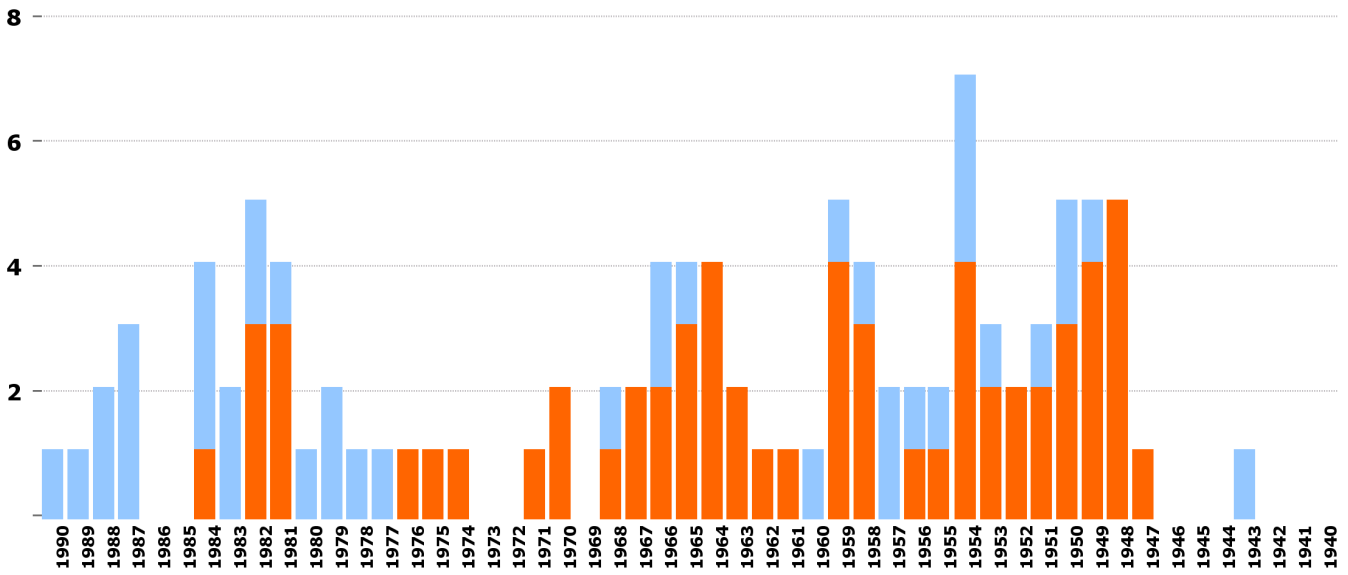
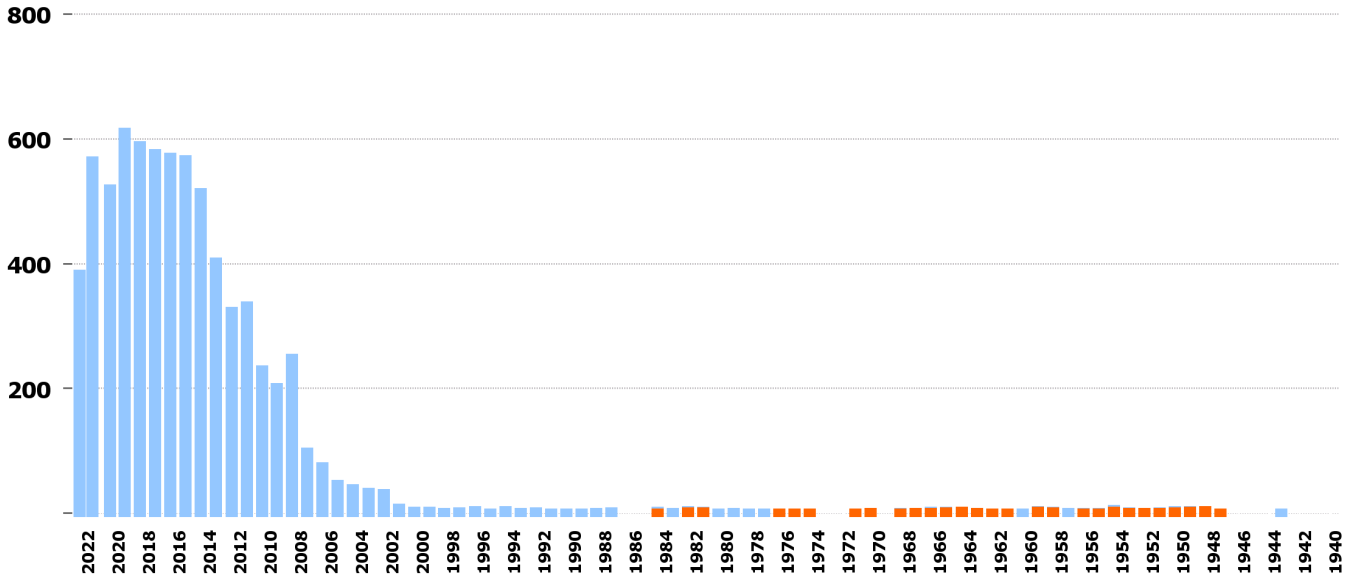
42 Traktor



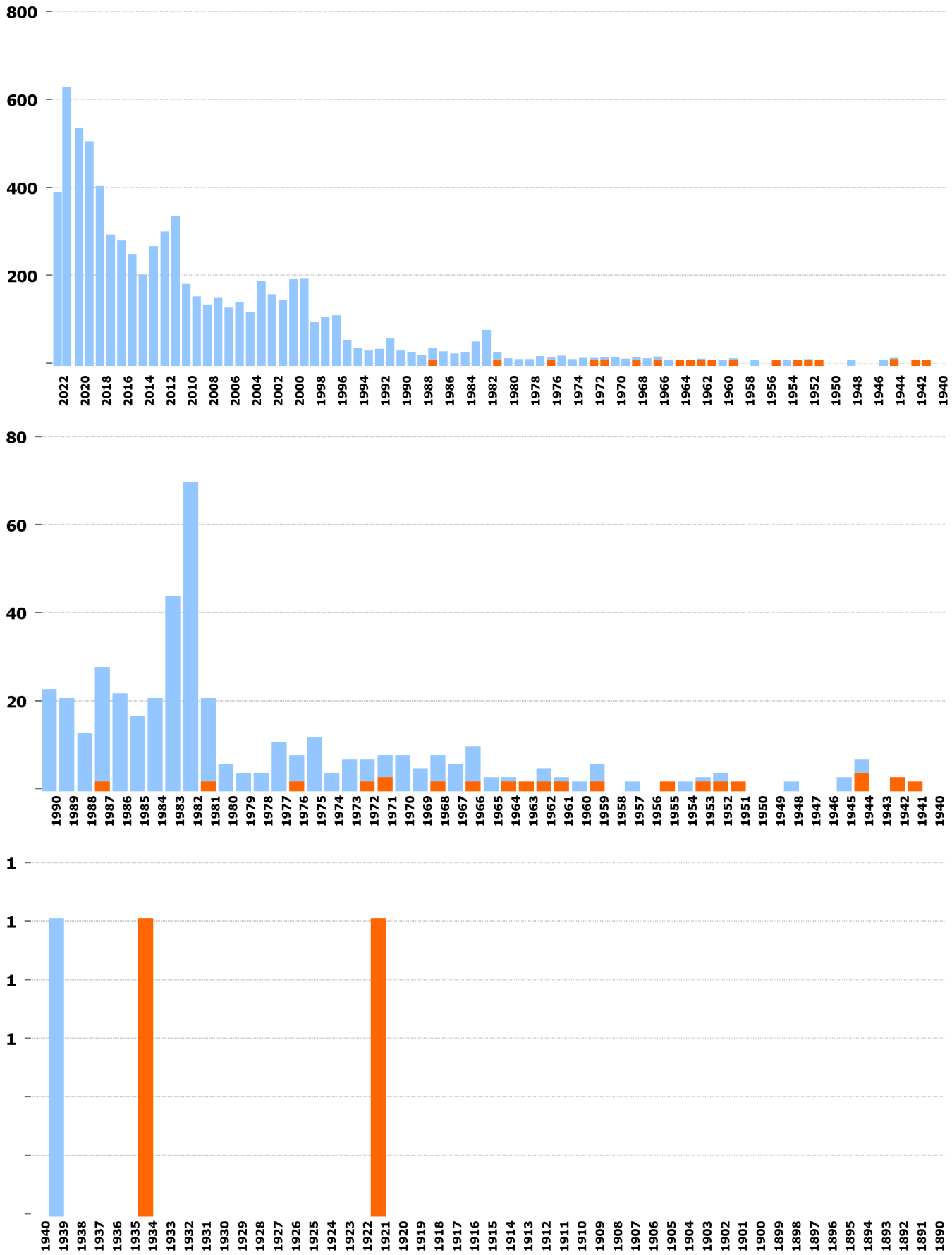
83 Landw. Motoreinachser



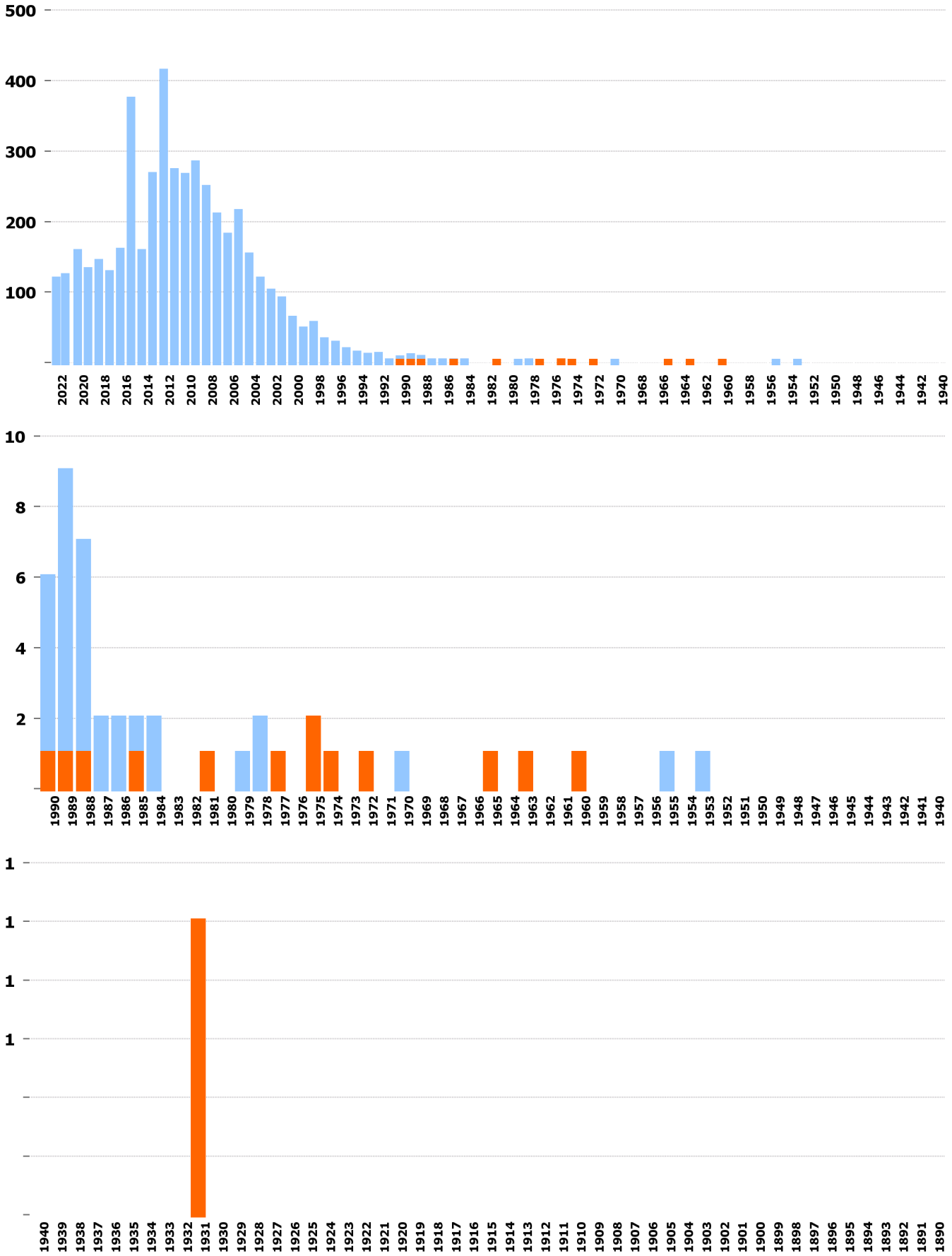
20 Gesellschaftswagen



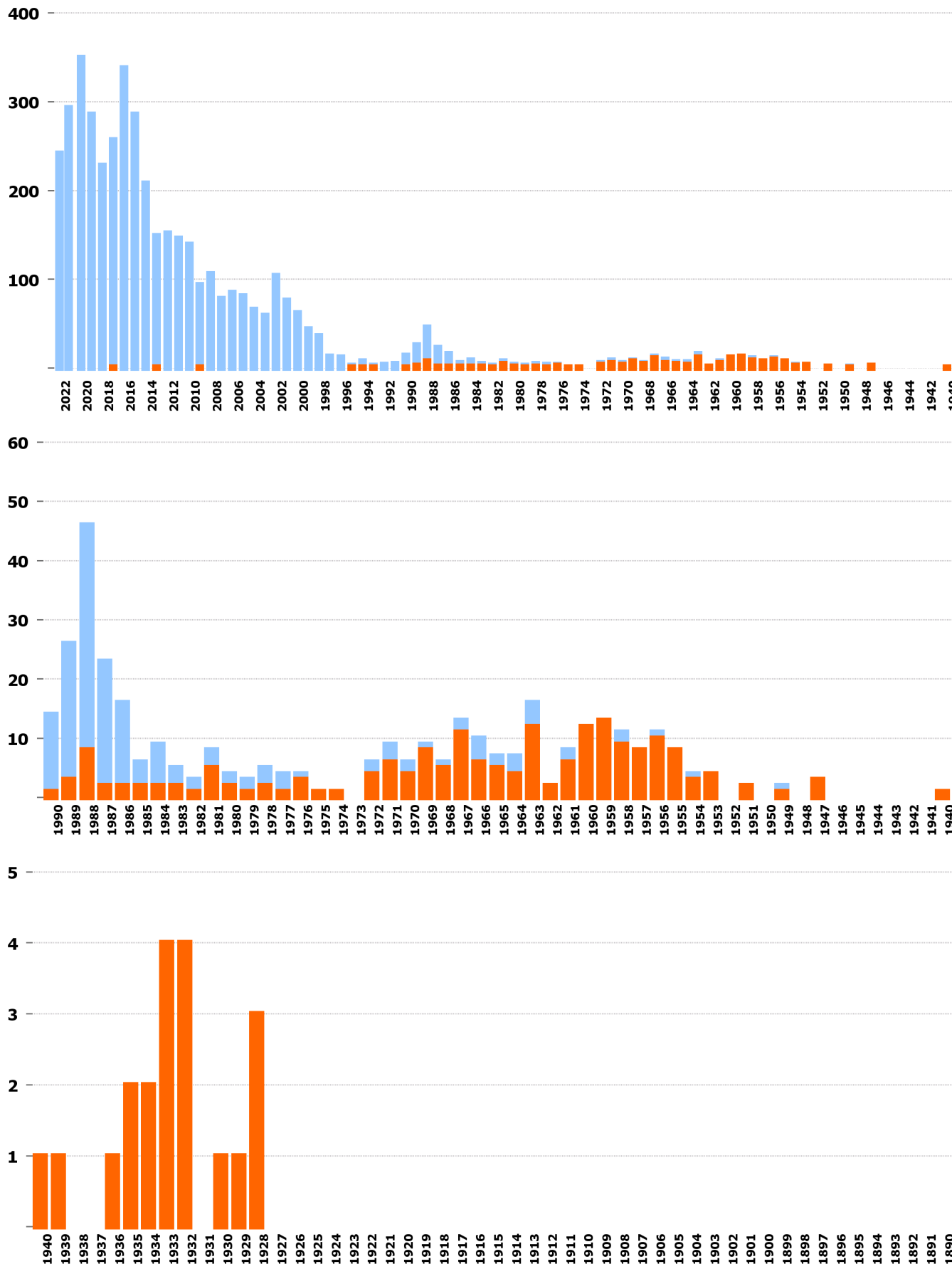
11 Schwerer Motorwagen



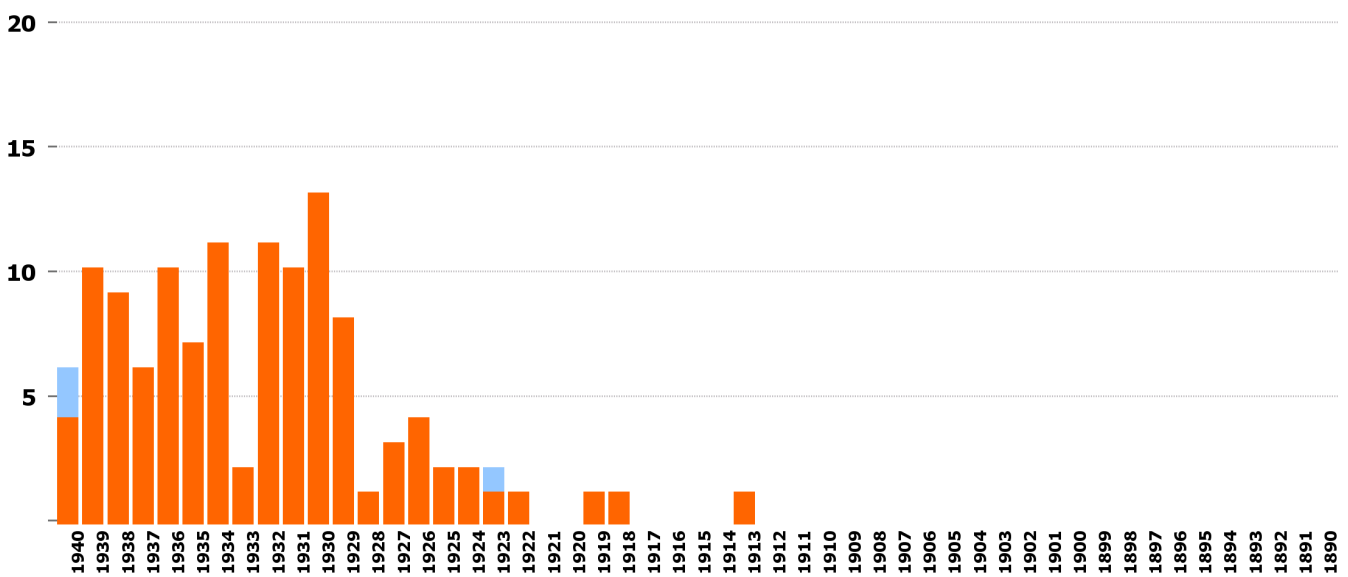
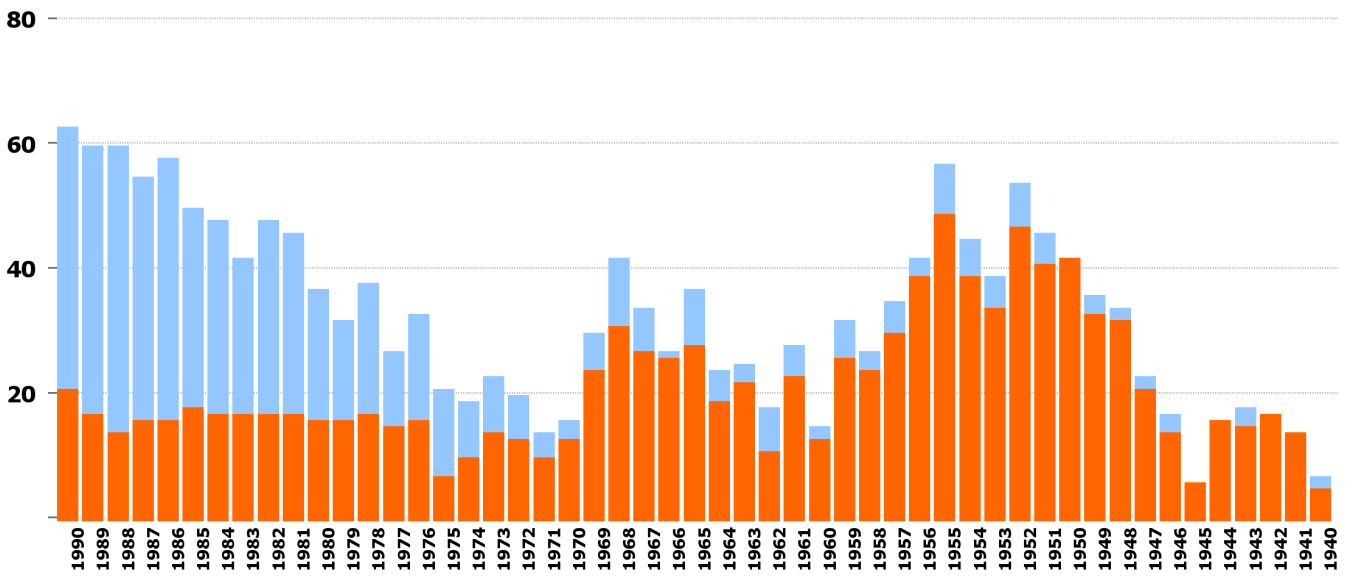
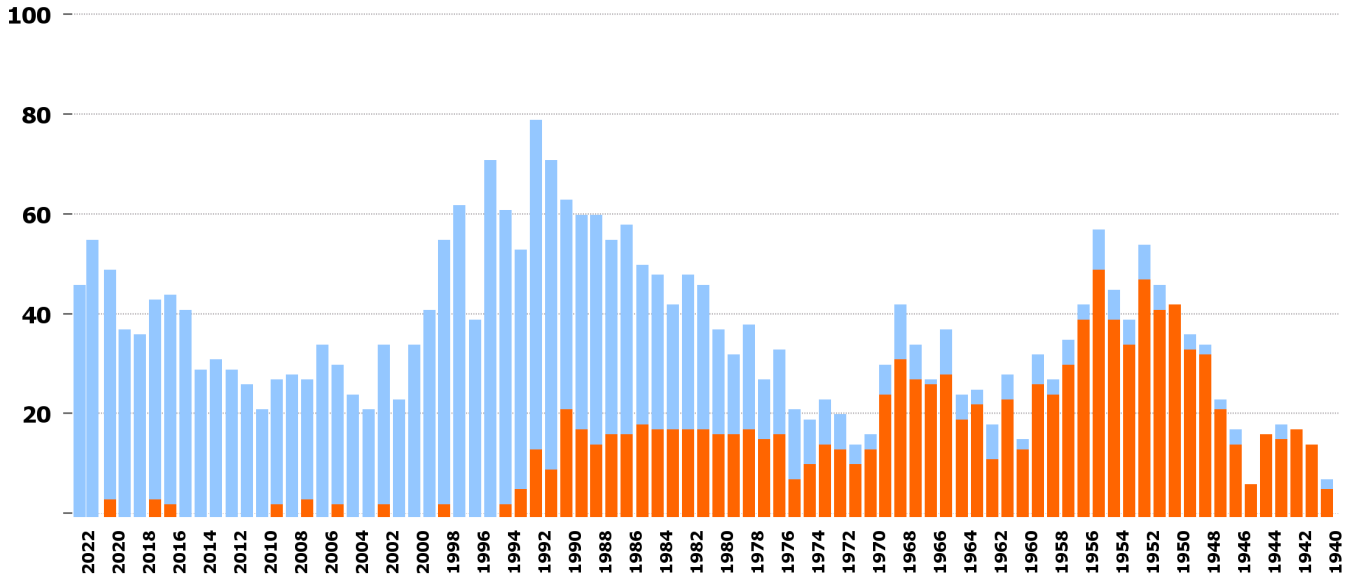
21 Kleinbus



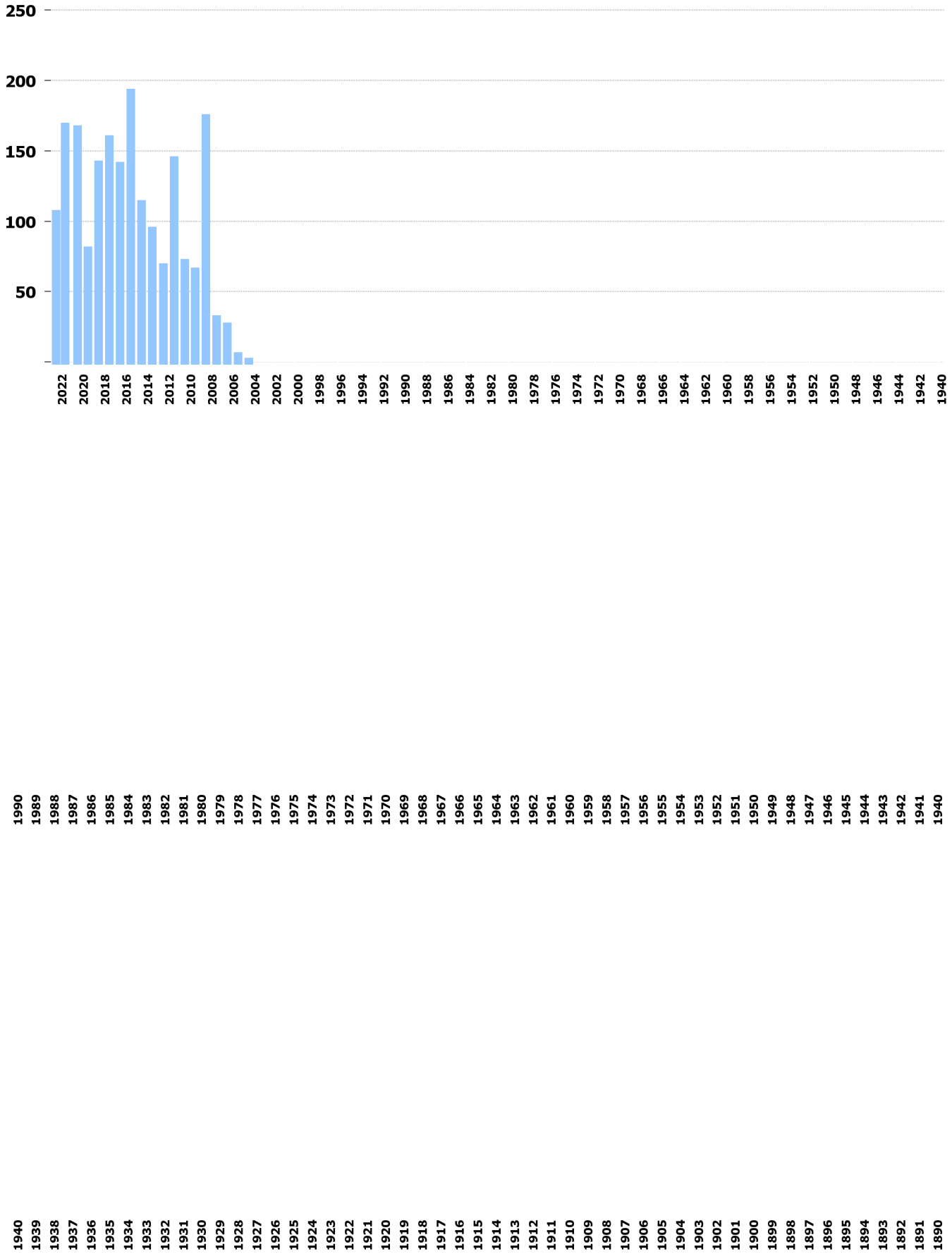
67 Dreirädr. Motorfahrzeug



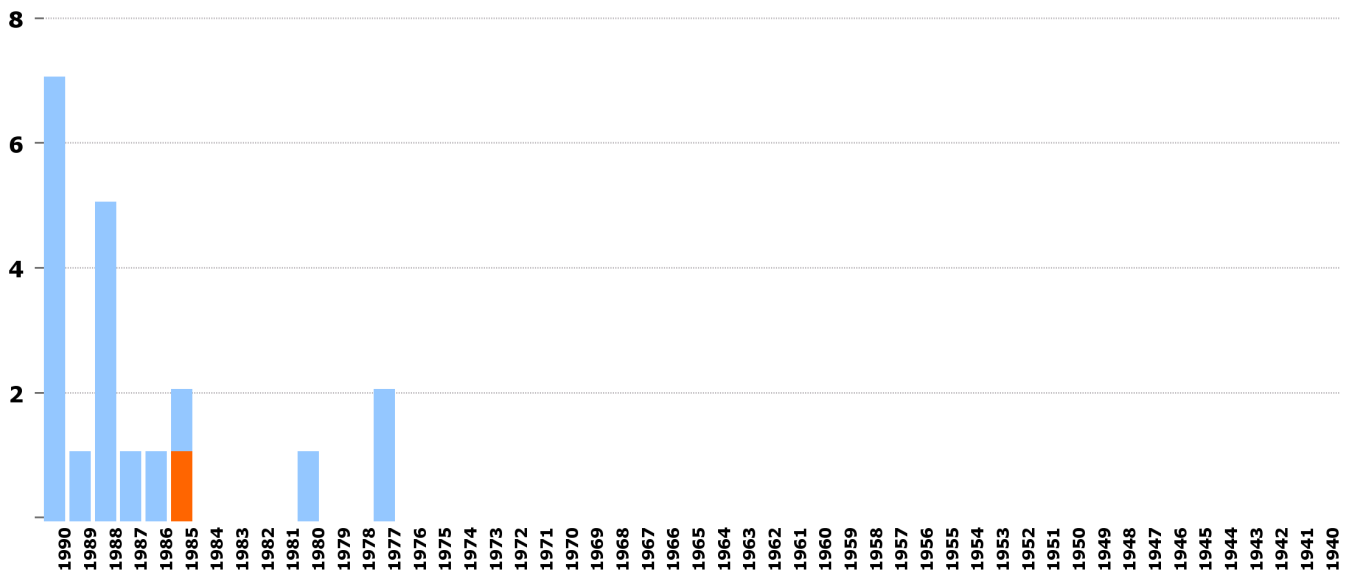
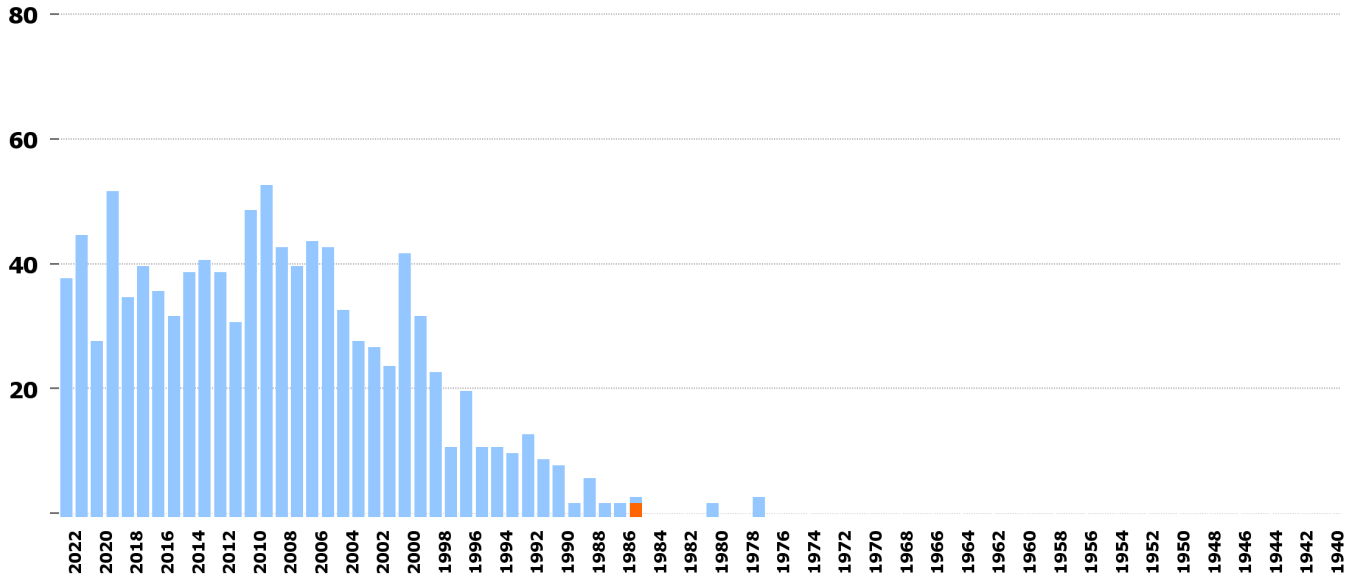
63 Motorrad-Seitenwagen



22 Gelenkbus

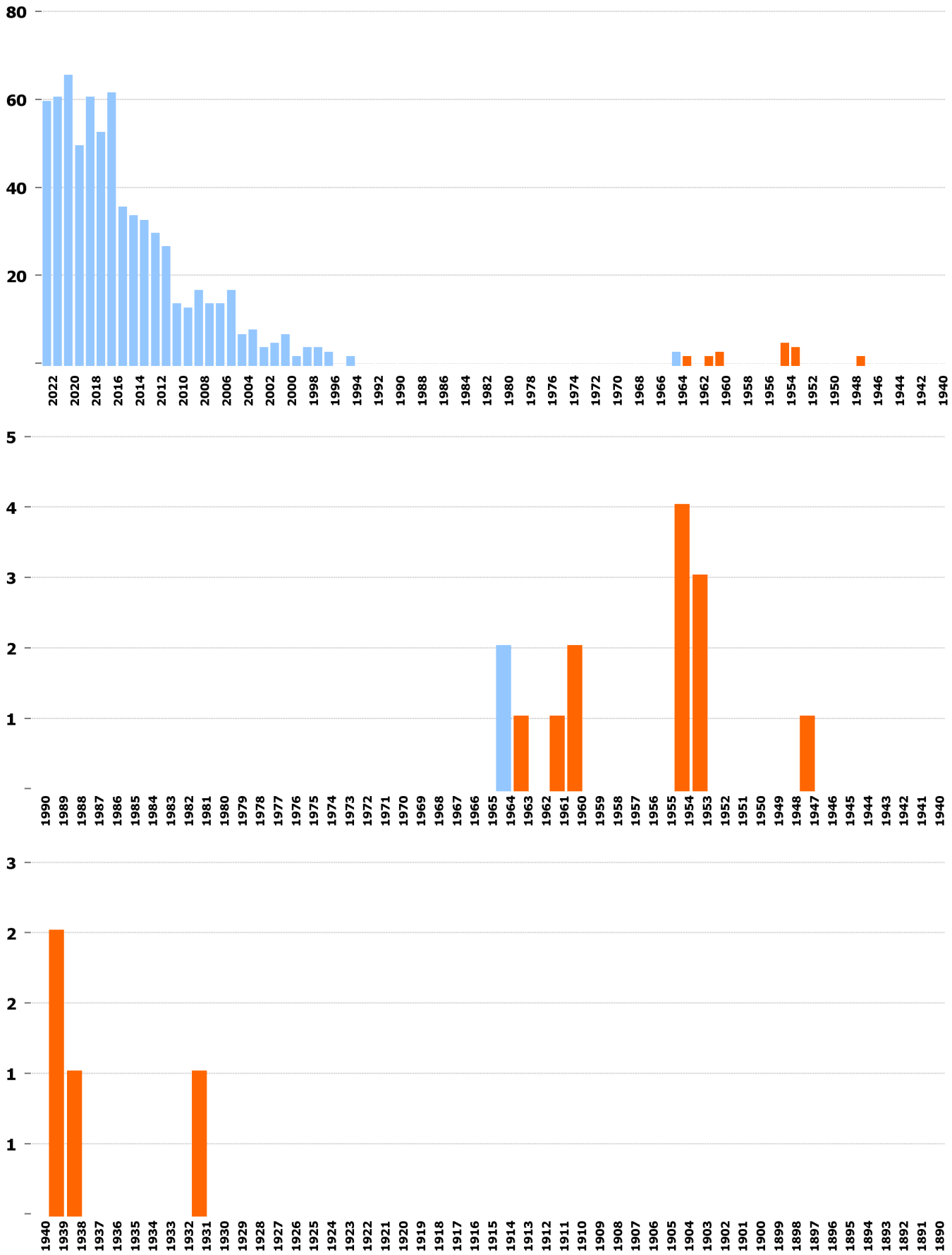


68 Motorschlitten

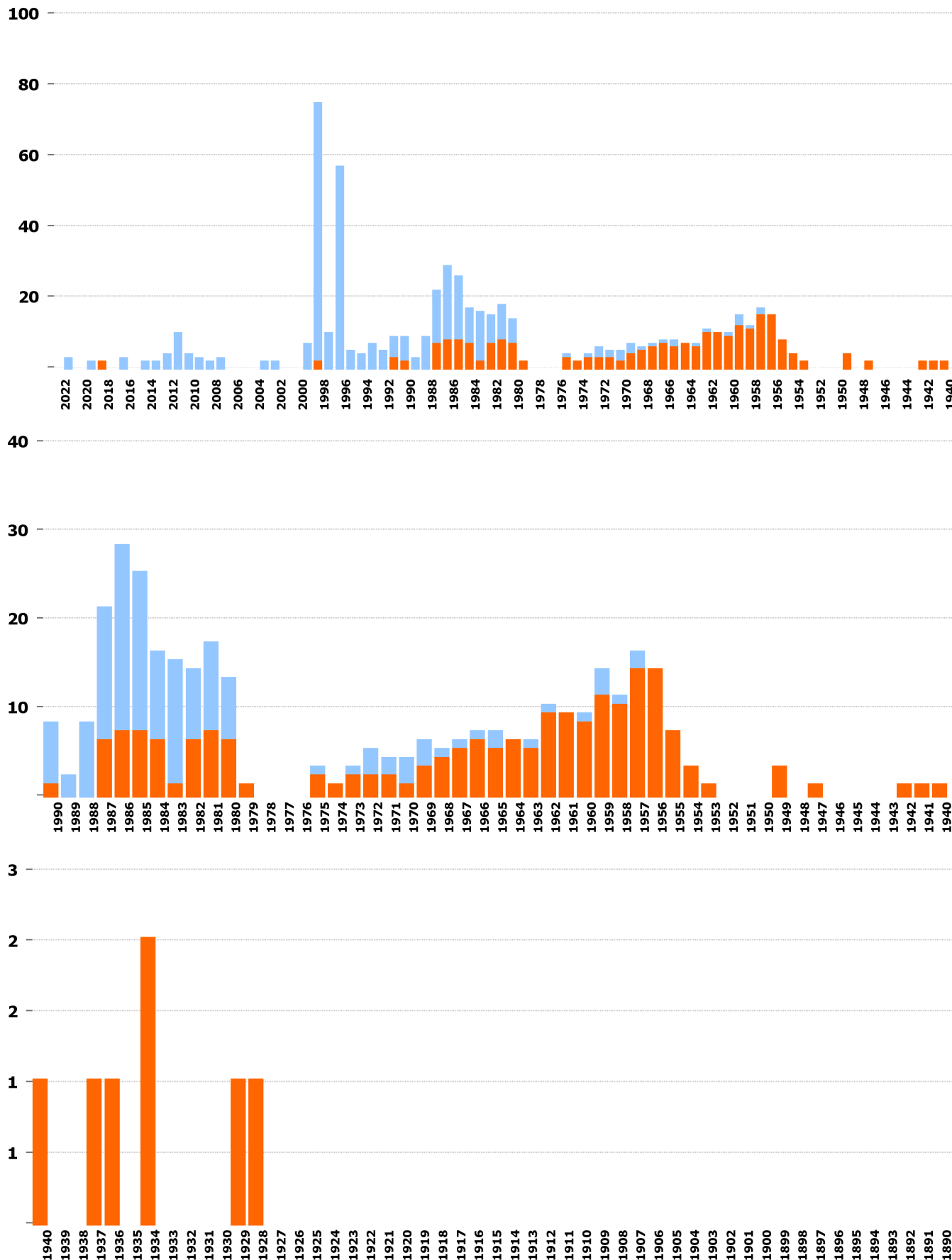


1940 1939 1938 1937 1936 1935 1934 1933 1932 1931 1930 1929 1928 1927 1926 1925 1924 1923 1922 1921 1920 1919 1918 1917 1916 1915 1914 1913 1912 1911 1910 1909 1908 1907 1906 1905 1904 1903 1902 1901 1900 1899 1898 1897 1896 1895 1894 1893 1892 1891 1890

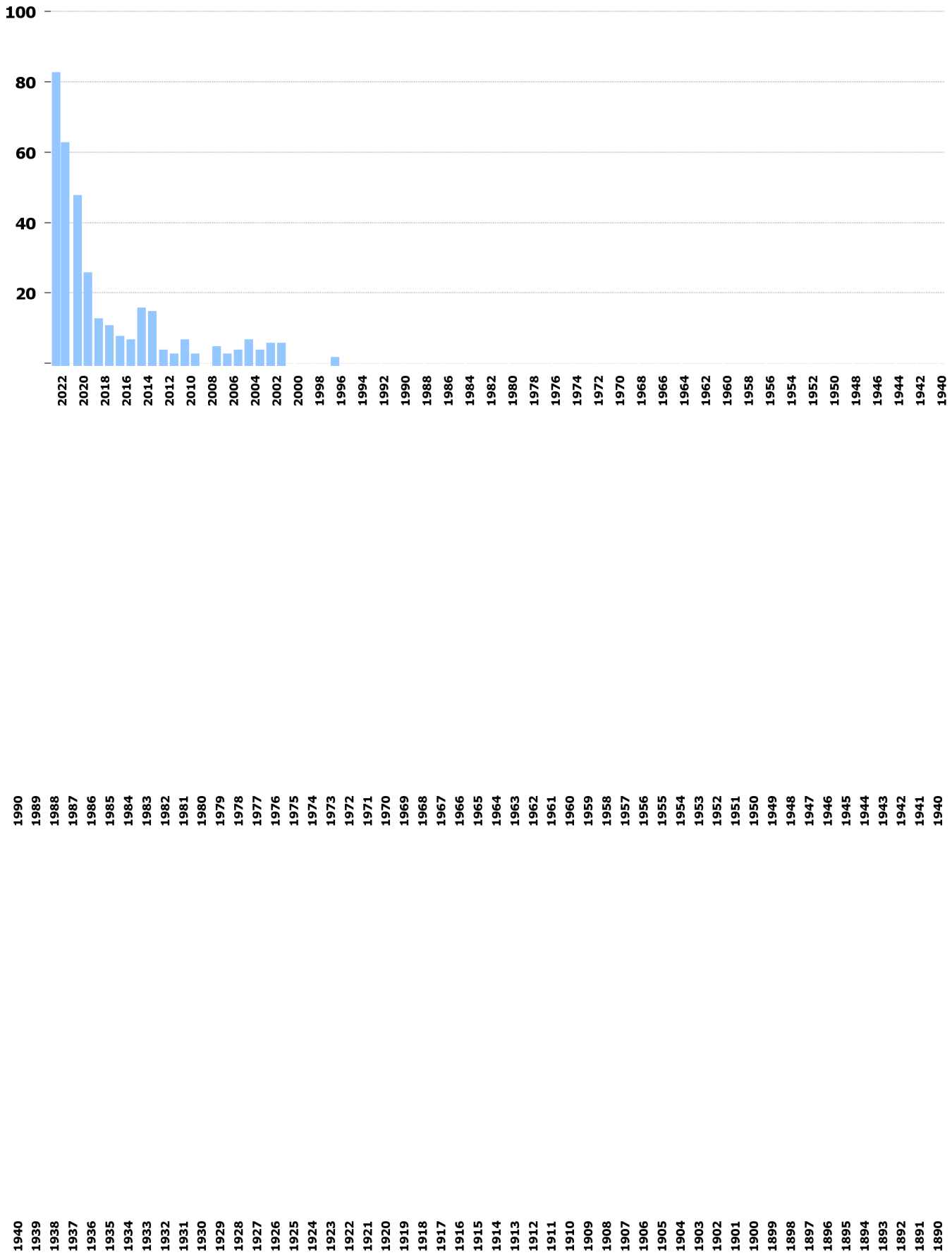
02 Schwerer Personenwagen



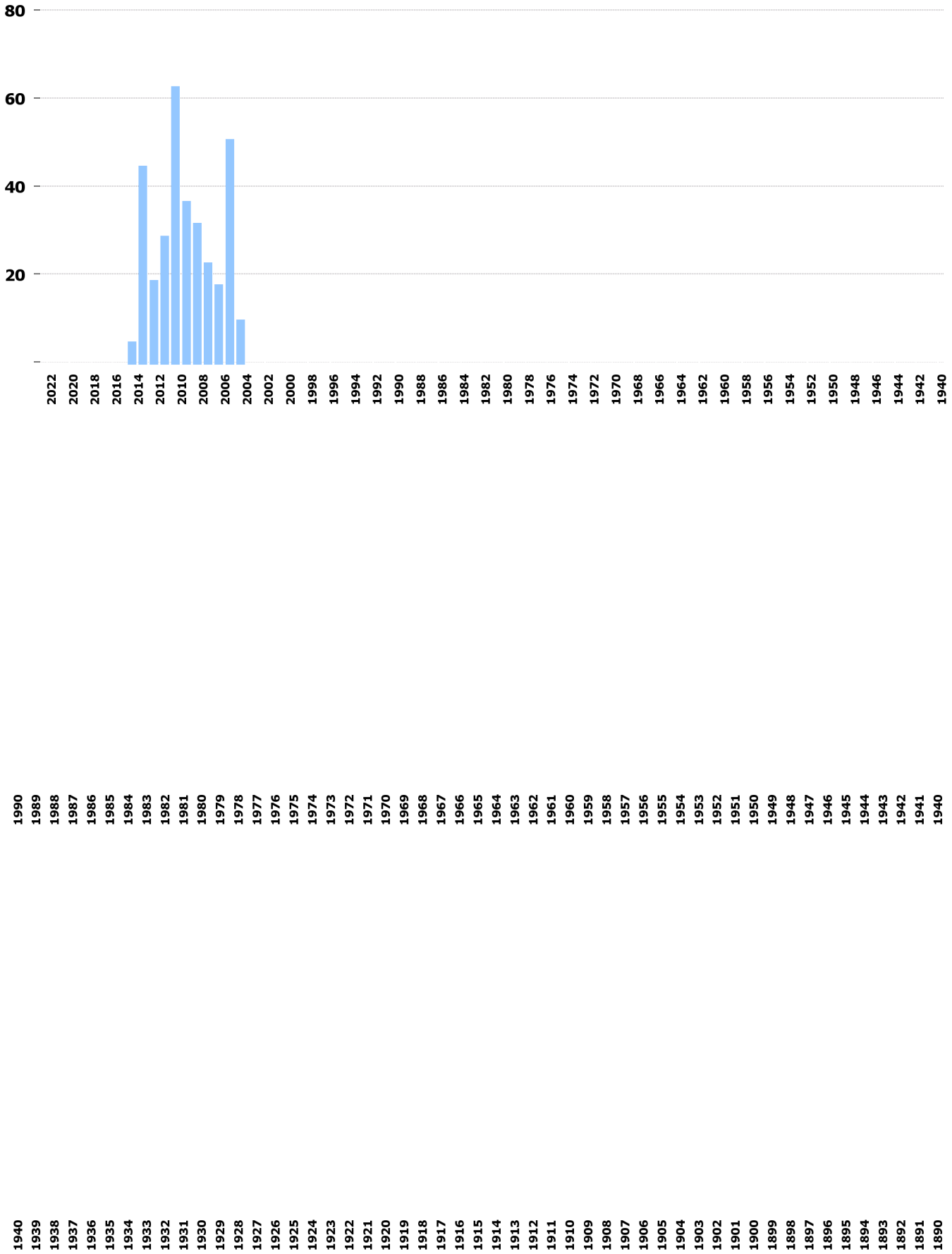
62 Motorrad-Dreirad



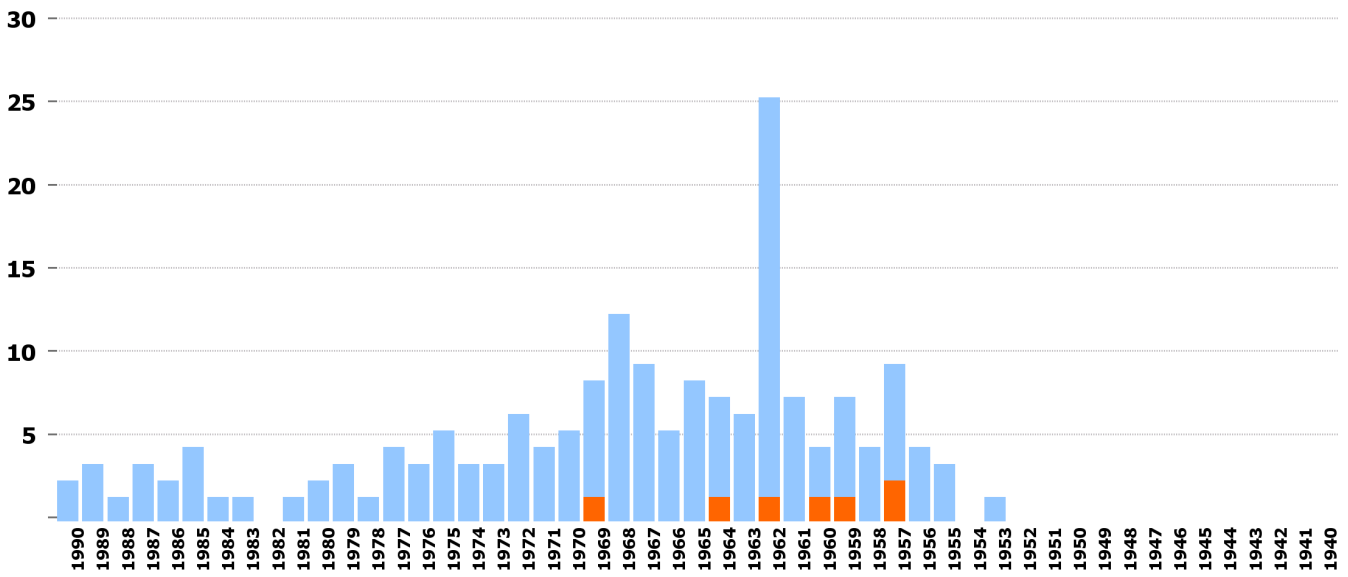
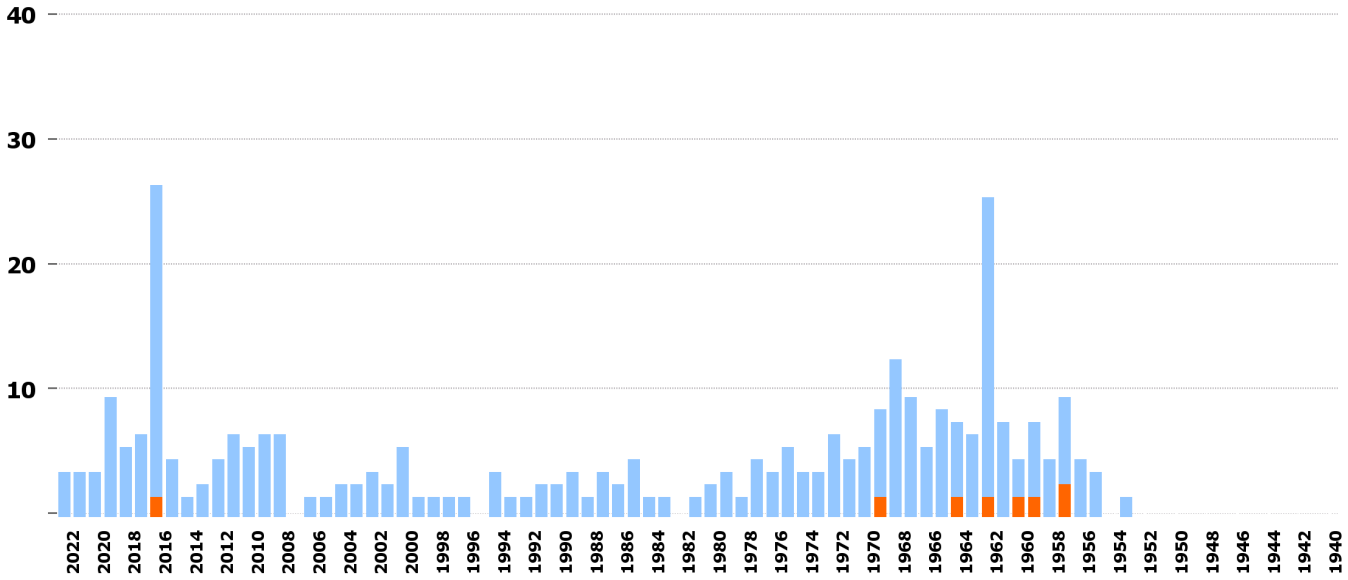
65 Leichtmotorfahrzeug



24 Gelenktrolleybus

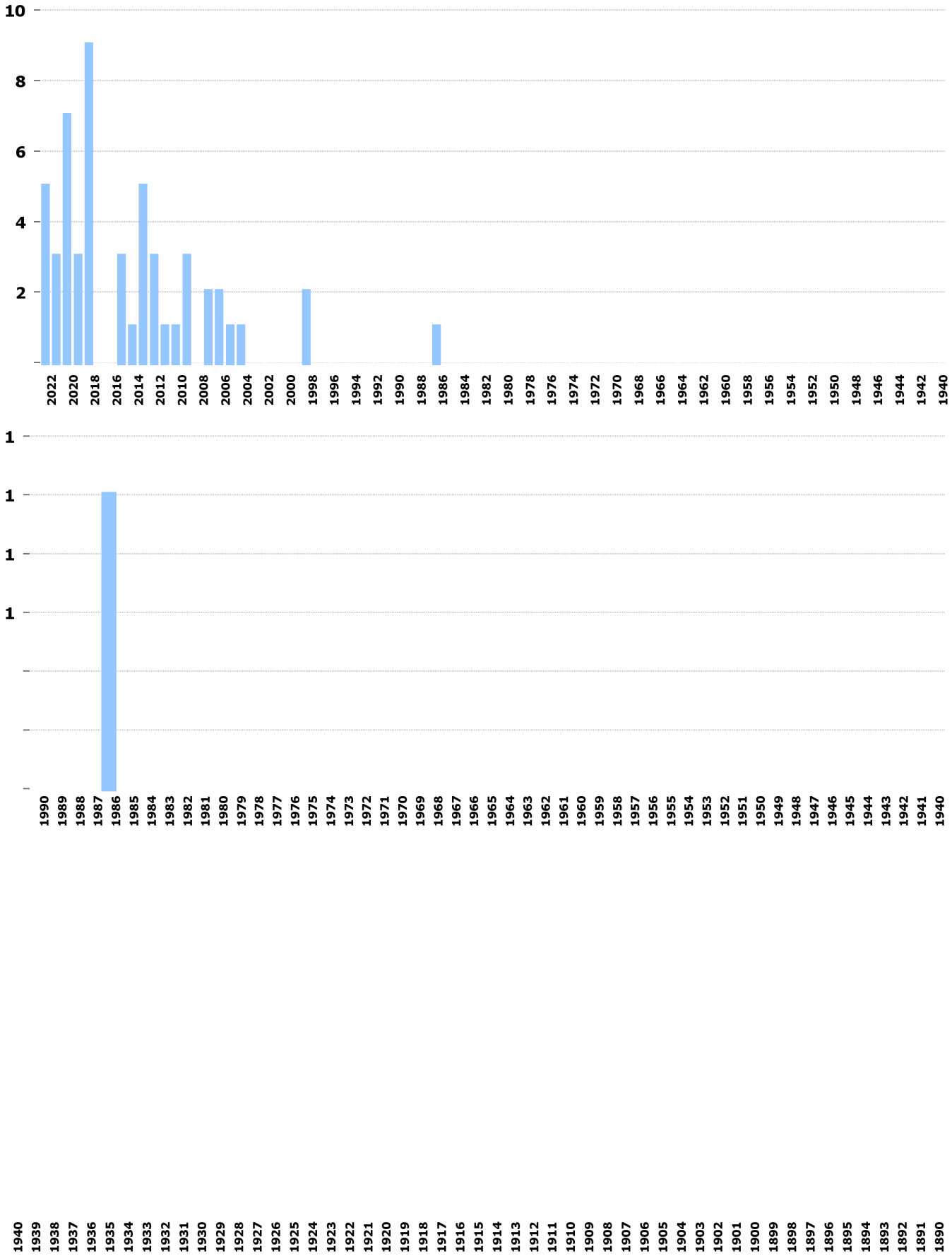


82 Motoreinachser

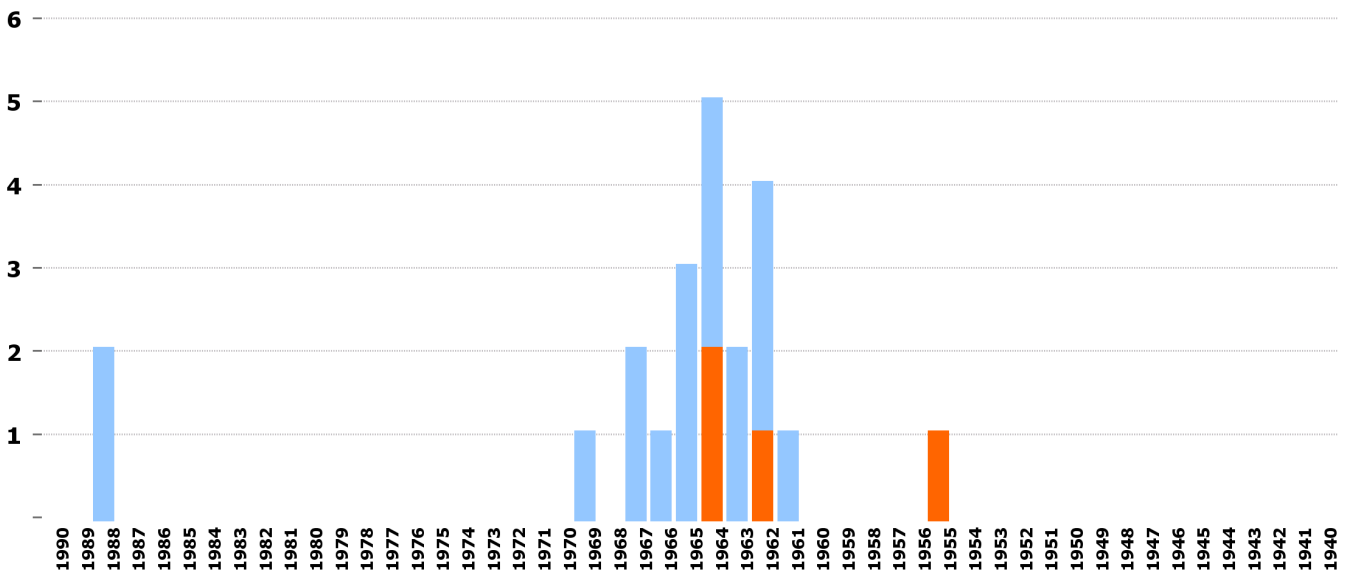
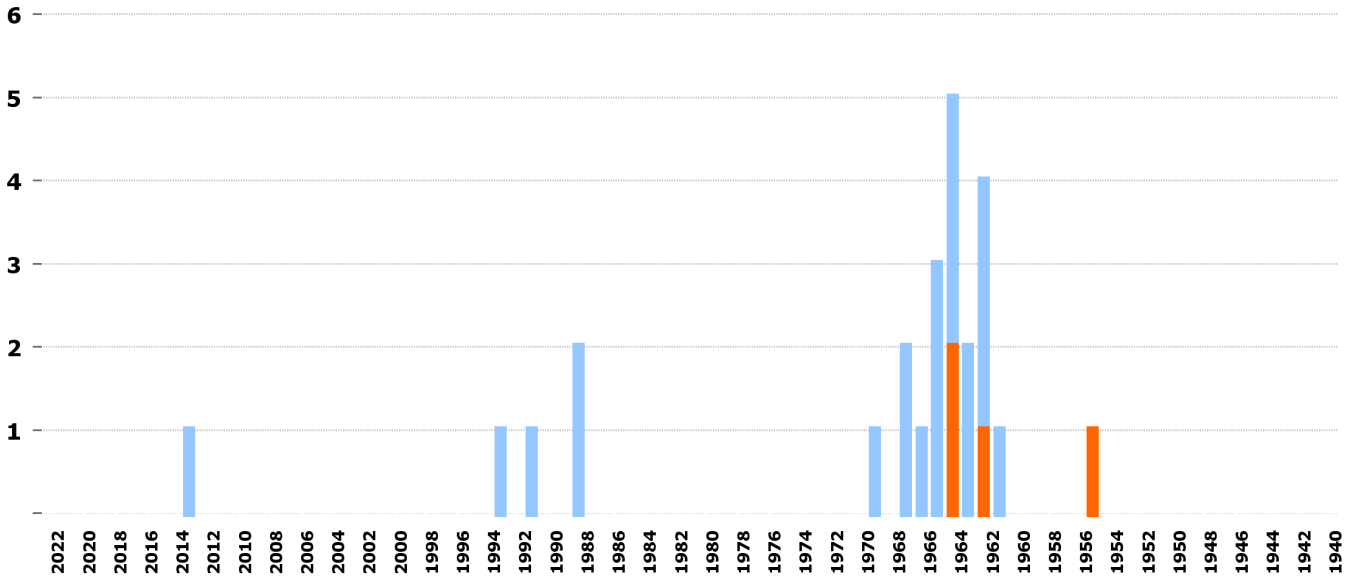


1940 1939 1938 1937 1936 1935 1934 1933 1932 1931 1930 1929 1928 1927 1926 1925 1924 1923 1922 1921 1920 1919 1918 1917 1916 1915 1914 1913 1912 1911 1910 1909 1908 1907 1906 1905 1904 1903 1902 1901 1900 1899 1898 1897 1896 1895 1894 1893 1892 1891 1890

37 Schweres Sattelmotorfahrzeug



84 Landw. Kombinations-Fahrzeug



1940
1939
1938
1937
1936
1935
1934
1933
1932
1931
1930
1929
1928
1927
1926
1925
1924
1923
1922
1921
1920
1919
1918
1917
1916
1915
1914
1913
1912
1911
1910
1909
1908
1907
1906
1905
1904
1903
1902
1901
1900
1899
1898
1897
1896
1895
1894
1893
1892
1891
1890

36 Leichtes Sattelmotorfahrzeug

